



City of Westminster

# Committee Agenda

Title: **Children, Sports & Customer Services Policy & Scrutiny Committee**

Meeting Date: **Monday 8th June, 2015**

Time: **7.00 pm**

Venue: **Rooms 5, 6 & 7 - 17th Floor, City Hall**

**Councillors**

**Andrew Smith Chairman**  
**Iain Bott**  
**Ruth Bush**  
**Melvyn Caplan**  
**Peter Cuthbertson**  
**Nick Evans**  
**Barbara Grahame**  
**Robert Rigby**

**Elected voting representatives**

**Aki Turan, Parent Governor**  
**Annie Ee, Parent Governor**

**Co-opted voting representatives**

**Brenda Morrison, Church of England Diocese Representative**  
**Louise McCullough, Roman Catholic Diocesan Representative**

**Co-opted non-voting representatives**

**Smita Bora, Principal of Westminster Academy**  
**Darren Guttridge, Headteacher, Edward Wilson Primary School**

**Members of the public are welcome to attend the meeting and listen to the discussion Part 1 of the Agenda**

**Admission to the public gallery is by ticket, issued from the ground floor reception at City Hall from 6.00pm. If you have a disability and require any special assistance please contact the Committee Officer (details listed below) in advance of the meeting.**



**An Induction loop operates to enhance sound for anyone wearing a hearing aid or using a transmitter. If you require any further information, please contact the Committee Officer, Sarah Craddock, Senior Committee and Governance Officer.**

**Tel: 020 7641 2770; Email: [scraddock@westminster.gov.uk](mailto:scraddock@westminster.gov.uk)  
Corporate Website: [www.westminster.gov.uk](http://www.westminster.gov.uk)**

**Note for Members:** Members are reminded that Officer contacts are shown at the end of each report and Members are welcome to raise questions in advance of the meeting. With regard to item 2, guidance on declarations of interests is included in the Code of Governance; if Members and Officers have any particular questions they should contact the Head of Legal & Democratic Services in advance of the meeting please.

## **AGENDA**

### **PART 1 (IN PUBLIC)**

#### **1. MEMBERSHIP**

To note any changes to the membership.

#### **2. DECLARATIONS OF INTEREST**

To receive declarations by Members and Officers of the existence and nature of any personal or prejudicial interests in matters on this agenda.

#### **3. MINUTES**

To approve the minutes of the meeting held on 21 April 2015.

**(Pages 1 - 10)**

#### **4. TRACKERS AND WORK PROGRAMME**

a) To note the progress in implementing the Committee's Recommendation and Action Trackers.

b) To note the Work Programme for 2015/16.

**(Pages 11 - 16)**

#### **5. CABINET MEMBER FOR SPORTS, LEISURE AND CUSTOMER SERVICES**

Councillor Steve Summers (Cabinet Member for Sports, Leisure and Customer Services) to update the Committee on current and forthcoming issues in his Portfolio.

**(Pages 17 - 22)**

#### **6. CABINET MEMBER FOR CHILDREN AND YOUNG PEOPLE**

Report from Councillor Danny Chalkley (Cabinet Member for Children and Young People) updating the Committee on current and forthcoming issues in his Portfolio.

**(Pages 23 - 26)**

#### **7. SPORTS AND LEISURE SERVICE REVIEW**

To examine the overall offer promoted by the Sports and Leisure Service.

**(Pages 27 - 50)**

**8. UPDATED REPORT ON LOOKED AFTER CHILDREN AND CARE LEAVERS**

To evaluate the work undertaken by the Council.

**9. REPORTS OF ANY URGENT SAFEGUARDING ISSUES**

Verbal Update (if any)

**10. ANY OTHER BUSINESS THE CHAIRMAN CONSIDERS URGENT**

(Pages 51 - 60)

**Peter Large**  
**Head of Legal & Democratic Services**  
**2 June 2015**

This page is intentionally left blank



CITY OF WESTMINSTER

# MINUTES

**CHILDREN, SPORTS AND LEISURE  
POLICY & SCRUTINY COMMITTEE  
21 APRIL 2015  
MINUTES OF PROCEEDINGS**

Minutes of a meeting of the **Children, Sports and Leisure Policy & Scrutiny Committee** held on Tuesday 21 April 2015 at 7pm at Westminster City Hall, 64 Victoria Street, London SW1E 6QP.

**Members Present:** Councillors Brian Connell (Chairman), Iain Bott, Ruth Bush, Paul Church, Nick Evans, Barbara Grahame, Robert Rigby and Karen Scarborough.

**Co-opted Members:** Aki Turan, Smita Bora, Darren Guttridge and Brenda Morrison.

**Also present:** Councillor Danny Chalkley (Cabinet Member for Children and Young People).

**Apologies for Absence:** Councillor Steve Summers, Annie Ee and Louise McCullough.

## **1. MEMBERSHIP**

- 1.1 It was noted that there was no changes to the Membership.
- 1.2 The Chairman welcomed Danny Chalkley (Cabinet Member for Children and Young People) to the meeting.
- 1.3 The Chairman advised that Councillor Steve Summers (Cabinet Member for Sports, Leisure and Open Spaces) would not be attending the meeting. Any questions that Members had regarding his portfolio would be placed on the Committee's Action Tracker.
- 1.4 The Chairman welcomed Melissa Caslake the new Director of Family Services to the meeting.
- 1.5 The Chairman also welcomed Sanchia Lyon, Headteacher of Dorothy Gardner Nursery School, who was attending the meeting to take part in the 'Implementation of the Targeted Early Learning Offer for 2 Year Olds' item.

1.6 The Chairman congratulated Rebecka Stevens on her appointment as Policy Officer at Harrow Council and thanked her for all she had done at Westminster City Council.

## 2. DECLARATION OF INTEREST

2.1 No further declarations of interests in respect of items to be discussed were made, other than those noted in the circulated schedule as set out below in paragraph 2.2.

2.2 Table of Member's interests tabled at the Committee Meeting was as follows:

<b>Councillor/Member of the Children, Sports and Leisure P&amp;S Committee</b>	<b>Organisation</b>	<b>Nature of Interest</b>
Smita Bora	Westminster Academy	Principal
Iain Bott	Paddington Academy One Westminster	Governor Non-Voting Member of the Board
Ruth Bush	Standing Advisory Committee on Religious Education Westminster Faith Exchange	Member Chair
Paul Church	King Solomon Academy	Governor
Darren Guttridge	Edward Wilson Primary School	Headteacher
Barbara Grahame	Quintin Kynaston Academy	Governor
Robert Rigby	St Josephs Primary School Our Lady's Secondary School, Hackney Local Authority Governor Appointment Panel	Governor Governor Member
Karen Scarborough	St Mary of the Angels Catholic School	Governor
Aki Turan	Quintin Kynaston Academy	Parent Governor

### **3. MINUTES**

- 3.1 **RESOLVED:** That the minutes of the meeting held on 30 March 2015 be approved for signature by the Chairman as a true and correct record of the proceedings subject to the following amendments:

Item 7- Private Fostering – Add to paragraph 7.2 that Councillor Ruth advised that as Chair of the Westminster Faith Exchange she was happy for the Head of Assessment and Multi Agency Safeguarding Hub (MASH) to contact the Faith Exchange regarding Private Fostering.

Correction of Typos in the minutes:

Paragraph 7.3 – Vacant should be vacate.

Paragraph 9.6(4) should read 'That the Committee noted that the relocation of St Marylebone Bridge Special School be managed by the Education Funding Agency in partnership with the GLA which may require some capital funding from the Council.

- 3.2 Members were given details of the Task Group being established to look at Active Communities.

### **4. ACTION AND RECOMMENDATION TRACKERS AND COMMITTEE WORK PROGRAMME**

#### **4.1 RESOLVED:**

1. That the Action and Recommendation Trackers be noted.
2. That the Active Communities Task Group would commence during the summer term.
3. That the Committee would review the Sports and Leisure Service and receive an updated report on Looked After Children, Care Leavers and Corporate Parenting at its next meeting on 8 June 2015.

### **5. QUESTION AND ANSWER SESSION: CABINET MEMBER FOR SPORTS, LEISURE AND OPEN SPACES**

- 5.1 The Committee received a written update from the Cabinet Member which covered current and forthcoming issues in his Portfolio.

### **6. QUESTION AND ANSWER SESSION: CABINET MEMBER FOR CHILDREN AND YOUNG PEOPLE**

- 6.1 The Committee received an update from the Cabinet Member who responded to questions relating to:

- the educational attainment/standard in Westminster Primary Schools.
- domestic violence, prosecution of criminal behaviour and effective programmes to address the behaviour.
- the work carried out at the Kennet West Skills Centre Partnership between QEII/Westminster Kingsway College with people with learning difficulties.
- the building of the University Technical College in Westminster.
- the admission criteria of Westminster's Academies and the ability to ensure that local residents were successful in gaining a place at their preferred Westminster school.
- the mentoring of young people with Special Educational Needs and those involved in crime and the benefits of the Council's 'Boost Mentoring programme.
- the details and impact of adolescents arriving in the UK alone.

## 6.2 **ACTIONS:**

1. That a briefing note be sent to the Committee on the delivery of the building for the Sir Simon Milton University Technical College along with the admission criteria and any funding issues/difficulties.
2. That the details and impact of adolescents arriving in the UK alone and then being placed in the care system be included in the updated Looked After Children report being reviewed at the next meeting. Members further requested that the report should also include any work that the Voluntary Sector carries out with these lone adolescents.

## 7. **IMPLEMENTATION OF THE TARGETED EARLY LEARNING OFFER FOR 2 YEAR OLDS**

- 7.1 The Committee received a report on the targeted early learning offer for 2 year olds which forms part of a wider strategy of early intervention and prevention for young children, targeting services where they were needed the most in order to improve outcomes for disadvantaged families.
- 7.2 Mike Potter, Head of Commissioning (Early Intervention), advised that free early education became a statutory entitlement for eligible two year olds from 1 September 2013 with the local authority having a duty to secure provision for those families who met the 20% eligibility criteria (Appendix 1 of the report set out the full eligibility criteria). The programme was then extended in September 2014 to include more low income families so that 40% of families nationally



became eligible. The Committee noted that there was a place available in Westminster for all eligible children, although building capacity to meet the expanded criteria had been a challenge and one shared with many other London boroughs.

7.3 The Committee heard that the benefits of accessing good quality early education would improve the life chances for these targeted children and that the offer would improve disadvantaged children's social and cognitive outcomes so that by the age of five they were as ready as their more advantaged peers to start and fully benefit from school. The Committee noted that research carried out showed that the key influences were:

- a good early years home environment
- a good quality pre-school
- a more effective primary school.

7.4 The Committee welcomed Sanchia Lyons, Headteacher of Dorothy Gardner Nursery School, who discussed with the Committee the opportunities and challenges of the 2 year old offer from the perspective of a maintained nursery school and how it linked in with the wider purpose of Children Centres in improving outcomes for disadvantaged families. She outlined some of the issues that the parents and children who take up the 2 year old offer encountered and the help that was available to them. The Committee heard that the majority of places were currently delivered through the private and voluntary early year's providers, including child minders, although three of the maintained nursery school also delivered places. The Committee noted the importance of good training for the nursery staff.

7.5 The following key issues emerged from the Committee's discussion:

- the challenge of identifying and funding adequate space for eligible children.
- the challenge for primary schools to expand physically in order to deliver the full 2 year old offer and whether they were the right setting to deliver this service.
- the important work carried out with Outreach Workers and Community Champions in encouraging parents to take up the offer.
- the benefits of receiving the names of eligible children and the marketing strategies that were used to encourage parents to take up the 2 year old offer and the 2 year old developmental review.

- the qualifications and training of nursery staff and child minders and the importance of speech and language services being available within the offer.
- the evidence base that there was a high risk of children from disadvantaged families ending up in care or failing education if early intervention was not accessible to them or their families.
- the possibility that the 2 year old offer be offered universally to parents and not to a small group of families.
- the possible detrimental effect of the offer, whether the offer should be made to the whole family and not just the child and the type of 'education' that the child was taught at the nursery.
- the presentation previously heard at the Committee advising that the 2 year old offer targeted at disadvantaged families had long term educational and social benefits for the child, family and community.

7.6 The Committee welcomed the work being carried out and noted that the two main risks for the Council not meeting their statutory deadline was insufficient places to meet demand and poor take up. The Committee noted that these two risk factors were being mitigated by the Council's Action Plan which included growing capacity within schools and carrying out a marketing campaign during the 2015 summer term.

7.7 **RESOLVED:**

1. That the presentation heard at a previous meeting be circulated to Members.
2. That a briefing note be sent to the Committee on the number and qualifications of child minders delivering the 2 year old offer.
3. That a progress report on the 2 year old offer be added to the Committee's Work Programme.

**8. YEAR 6-7 TRANSITION**

8.1 The Committee received a report on how the Westminster's Early Help (locality) Service supported Westminster pupils going through Year 6 -7 transition and the interventions that were delivered after identifying the children who were likely to struggle with transition and prioritising these children into three levels of support depending on their need.

8.2 Jayne Verkin, Head of Early Help Services, outlined the interventions delivered to each area of need, including the delivery of the summer activity programme. The Committee heard that it was not only disadvantaged children that needed help but also highly intelligent children found Year 6-7 transition difficult. She further highlighted that there was still the issue of children attending Westminster schools who lived out of borough who might not have received a similar level of Year 6-7 Transitional support.

8.3 The following key issues emerged from the Committee's discussion:

- the different approaches that primary and secondary schools could introduce to help children during this difficult period.
- the benefits of engaging the parents in supporting their child during transition.
- the importance of developing a tracking tool to better understand outcomes and the interventions that made the most impact to a child during transition.
- the benefits of tracking a child's progress throughout the whole of Year 7.
- the importance of cross borough working due to the difficulties schools encountered with children from out of borough attending Westminster schools. The schools usually received very little or no information about the child's education and/or their special needs.
- the issues of a significant minority of children could affect a whole year group of children.

8.4 The Committee welcomed the progress being made against each of the three areas (identification, intervention and evaluation) and the work being undertaken in the wider context of the new 'on track' project. The Committee noted that there was still considerable work to be undertaken in 2015 to fine-tune the approach.

8.5 **RESOLVED:**

1. The Committee agreed that a follow up report be added to the Committee's Work Programme for January 2016.

## **9. Annual Looked After Children (LAC) and Care Leavers Report 2014**

- 9.1 The Committee received a report highlighting the significant responsibilities the local authority has in relation to Looked After Children (LAC) and how it discharges these.
- 9.2 Glen Peache, Tri Borough Assistant Director for Looked after Children and Care Leavers, outlined the work of the Corporate Parenting Panel which monitored how the Council discharged its corporate parenting responsibilities and how Looked After Children were able to give feedback on the services provided for them. The Committee noted how the Local Safeguarding Children's Board (LSCB) was looking into how Looked After Children with poor mental health could be supported until the age of 21 as the support provided to them by the Child and Adolescent Mental Health Services (CAMHS) ceased at the age of 18.
- 9.3 The Committee noted that at their next meeting they would be reviewing the outcomes and life chances of Westminster's Looked After Children and Care Leavers and requested that their educational attainment, especially their secondary school attainment, be included in the report and compared to children not in care. Members further asked that information on how Westminster compared to other authorities be included in the report.
- 9.4 The Committee requested that they be invited to attend the Children in Care Council (CICC) so that they might work with the young people. The Committee further requested that the report setting out the possibilities of supporting Looked After Children with poor mental health until they are 21 years of age be forwarded to the Committee when available.
- 9.5 **RESOLVED:**
1. That the requests at paragraph 6.2(2), paragraph 9.3 and paragraph 9.4 be included in the report being reviewed at the next meeting.
  2. That the Committee invite Mathew Blood, Virtual Head of Looked After Children, to attend the next meeting.
  3. That Committee Members be invited to attend the next Children in Care Council (CICC).
  4. That the Committee congratulate the care leaver who achieved a distinction in a Master's Degree in Astrophysics.
  5. That a report setting out the possibilities of supporting Looked After Children with poor mental health until they are 21 years of age be sent to the Committee when available.

**10. UPDATE ON SAFEGUARDING ISSUES** (verbal update – see agenda item 10)

10.1 **RESOLVED:** The Committee noted that there was nothing to report.

**11. TERMINATION OF MEETING**

11 .1 The meeting ended at 9.16pm.

CHAIRMAN \_\_\_\_\_

DATE \_\_\_\_\_

This page is intentionally left blank

# Action and Recommendation Trackers and Work Programme

## Children, Sports and Customer Services Policy and Scrutiny Committee

---

Date                      **8 June 2015**

---

---

Classification        **General**

---

---

Report author and **Mark Ewbank, Policy & Scrutiny Officer**  
telephone                      **mewbank@westminster.gov.uk**

---

### **1. Action and Recommendation Trackers**

The Children's, Sport and Customer Services Policy and Scrutiny Committee examines the wide range of council services and projects that generally fall within the portfolios of Children and Young People, and Sport, Leisure and Open Spaces.

This document presents the legacy actions and recommendations from this committee that result from the 30 March 2015 and 21 April 2015.

### **2. Work Programme**

The work programme sets out the business of the Committee for the year ahead.

### **3. Recommendations**

That the Committee:

- (a) Notes the updates contained within the action and recommendation trackers.
- (b) Note the current work programme and the schedule for the next meeting.

# Action Tracker



## Children, Sports and Customer Services Committee

### ROUND SIX 2014/15 (30 March 2015)

Agenda Item	Action and responsible officer/ Cabinet member	Update
Sports Facilities	To request that site visits of sports facilities be arranged for members for an afternoon in the near future.	Officers are liaising to arrange this.
School Organisation and Investment Strategy	That a briefing be emailed to members covering – <ul style="list-style-type: none"> <li>the impacts on existing WCC secondary schools on increasing figures</li> <li>the impact on WCC parents achieving their first preference</li> <li>the consequences (and any insight officers may have) on existing schools of no action is taken. <b>Ian Heggs</b></li> </ul>	Sent on both 14 <sup>th</sup> May and then 18 <sup>th</sup> May to former and new Members

### ROUND SEVEN 2014/15 (21 April 2015)

Agenda Item	Action and responsible officer/ Cabinet member	Update
Cabinet Member Update	For a briefing on UTCs across London to be circulated to members.	Requested. Awaiting circulation.
Two Year Old Offer	That the WAVE presentation be recirculated via email for information.	To be sent.
Looked After Children	In relation to page 62 para 9.3, if there is no legal hurdle and a budget that can be identified, for a bunch of flowers to be sent to the person in question for her achievements.	To be sent
Looked After Children	To ascertain as to whether it would be appropriate for members to attend a future meeting of the Corporate Parenting Board to gain an insight into its work.	Clarification before meeting.



# Work Programme



Children, Sports and Customer Services Committee

## ROUND ONE - 8 June 2015

Main Theme – Sport, Leisure and Open Spaces/ Children and Young People

Agenda Item	Reasons & objective for item	Represented by:
<b>Cabinet Member questioning</b>	To hold to account and give 'critical friend' challenge to the portfolio holder.	Cabinet Member for Sport, Leisure and Open Spaces
<b>Sports and Leisure- Service Review</b>	To provide a report on the activities of the sports and leisure service including a review of the impact on wider corporate priorities and outcomes	Richard Barker/ Andy Durrant
<b>Annual Review of the Looked After Children, Care Leavers and Corporate Parenting</b>	Evaluation of work undertaken into LAC, Care Leavers and Corporate Parenting. Further to a request at the meeting of 21 April, this report will include information on the spike that has been experienced in asylum seeker children. It was also requested that comparator figures with other local authorities be included in this report.	Andrew Christie/ Glen Peache

## ROUND TWO - October 2015

Main Theme – Children and Young People

Agenda Item	Reasons & objective for item	Represented by:
<b>Cabinet Member questioning</b>	To hold to account and give 'critical friend' challenge to the portfolio holder.	Cabinet Member for Children and Young People
<b>Annual Safeguarding Review</b>	To examine the work of the Safeguarding Board in the last year and the plans for the following year.	Tri Borough Safeguarding Officers
<b>Elective Home Education</b>	To examine any progress which maybe have been made on the updating of the relevant legislation and regulations (follow up from 2014/15).	Andrew Christie

**ROUND THREE – 7 December 2015**  
**Main Theme – Children and Young People**

<b>Agenda Item</b>	<b>Reasons &amp; objective for item</b>	<b>Represented by:</b>
<b>Cabinet Member questioning</b>	To hold to account and give ‘critical friend’ challenge to the portfolio holder.	Cabinet Member for Children and Young People
<b>Annual Education Report</b>	The committee will evaluate the key areas of success and areas to be developed in the Annual Education Report.	Ian Heggs
<b>Child Sexual Exploitation</b>	To examine the processes and procedures in place to protect children at risk of sexual exploitation.	Andrew Christie

**ROUND FOUR – 1 February 2016**  
**Main Theme – Sport, Leisure and Open Spaces**

<b>Agenda Item</b>	<b>Reasons &amp; objective for item</b>	<b>Represented by:</b>
<b>Cabinet Member questioning</b>	To hold to account and give ‘critical friend’ challenge to the portfolio holder.	Cabinet Member for Sport, Leisure and Open Spaces
<b>Children and Families of Service Personnel</b>	At the meeting of 9 February 2015 members requested that they be provided with an annual update on the needs of children of Service Personnel. (For information).	Steve Bywater
<b>A review of PE and School Sport Activities</b>	A review paper on the strategy and activities relating to PE and School Sport including the impact on the wider curriculum.	Richard Barker/ Andy Durrant

**ROUND FIVE – 14 March 2016**  
**Main Theme – Children and Young People**

<b>Agenda Item</b>	<b>Reasons &amp; objective for item</b>	<b>Represented by:</b>
<b>Cabinet Member questioning</b>	To hold to account and give 'critical friend' challenge to the portfolio holder.	Cabinet Member for Children and Young People
<b>Female Genital Mutilation</b>	To examine what the council and partner organisations have in place to deal with and prevent FGM.	

**ROUND SIX – 9 May 2016**  
**Main Theme – Children and Young People**

<b>Agenda Item</b>	<b>Reasons &amp; objective for item</b>	<b>Represented by:</b>
<b>Cabinet Member questioning</b>	To hold to account and give 'critical friend' challenge to the portfolio holder.	Cabinet Member for Children and Young People

**Other Committee Events & Task Groups**

<b>Group/ Issue</b>	<b>Update</b>	<b>Type</b>
<b>Active Communities Task Group</b>	Awaiting a start on this Task Group. Membership confirmed.	Task Group

This page is intentionally left blank



## Sports, Leisure and Customer Services Policy and Scrutiny Committee Briefing

**Date:** 8<sup>th</sup> June 2015

**Briefing of:** Councillor Steve Summers

**Portfolio:** Sports, Leisure and Customer Services

**Briefing Author and Contact Details:** Councillor Steve Summers  
[ssummers@westminster.gov.uk](mailto:ssummers@westminster.gov.uk)  
0207 641 5729

### 1. Sports and Leisure

#### Sports and Leisure Performance- 2014/15

1.1 Overall performance 2014/15 was extremely positive and particular highlights include:

- 3,921,313 visits have been made to sports and leisure centres which surpasses the full year target and represent the highest figure ever recorded.
- 33,184 visits to the Sayers Croft Centre (surpassing the full year target).
- 145,000 swimming lessons delivered which exceeds the annual target and represents a 45% increase in uptake compared with the previous year. This is an extremely positive result and follows a change in the operational arrangements (lessons are now delivered directly by GLL).
- 7,269 ActiveWestminster Passport and Concession card holders across all facilities (full year target achieved).
- 8,110 participants in the exercise referral scheme.
- 120 registered athletes on the 'Champions of the Future Programme' (full year target achieved).
- 65 accredited sports clubs in Westminster through the 'ActiveWestminster Mark' programme (full year target achieved).

#### 2014/15 Revenue and Capital Budgets

1.2 The sport and leisure revenue year end outturn is £10k under budget across all service areas and all risks have been mitigated and the planned budgeted savings have been achieved in full. Financial performance across the contracted sports and leisure facilities and the Council's 'in house' Sayers Croft Centre remains very strong with income exceeding £13m for the first time.

1.3 The overall capital outturn was £30k ahead of budget. All schemes have been delivered to budget with the exception of the 'Porchester Phase 3' development which was moved to 2015/16 (as reported to the Council's Capital Review Group earlier in 2014).

## The Porchester Centre

1.4 A variety of improvement works are progressing at the Porchester Centre including:

- **New Office Accommodation and Meeting Space.** Works to improve the existing ground floor area of Bridgefield House (the building adjacent to the Porchester Centre) have completed. The new facility will provide a flexible office space for Contractor and will accommodate meetings and training events.
- **New Centre Signage.** The signage for the Porchester Centre, Hall and the Porchester Spa has been given a more traditional makeover. The dated plastic sign above The Porchester Centre and the blue neon signs above The Porchester Spa have been replaced with more appropriate and high quality Bronze lettered signage, this signage is also lit up in the evening to ensure everyone can identify the iconic and beautiful building. The Centre signage is much more in keeping with this historic building and gives the facility a new lease of life.
- **New Bar area in the Porchester Hall.** The old bar area in Porchester Hall has been completely renovated to provide a much more welcoming area to host small parties, meetings and other functions. All work was completed to preserve and enhance the look and feel of the building, restoring and embracing some of the existing period features. The original radiators have been reinstated and the decoration of the mouldings in the higher sections of the walls brings the room to life. All original woodwork has been varnished and a brand new floor laid ready to accommodate the variety of functions and events at the Porchester Hall.
- **New exercise studio.** Work will soon begin to transform the unused basement space under the new offices in Bridgefield House. This area will become a more functional space to increase the fitness provision of the centre and provide some much needed space for courses and training.

## Sayers Croft

1.5 Works to extend and improve one of the accommodation blocks at the site have completed.

## Queens Park Gardens

1.6 The improvement works to the 'free to access' Games Area (new fencing, floodlighting and improvements to the surface) and the provision of new outdoor gym equipment at Queens Park Gardens have completed.

## Westminster Mile 2015 - Sunday 24<sup>th</sup> May 2015

1.7 Over 6,500 registrations were made to the Mile event which exceeded the 2014 registrations, again with huge interest in the family races which attracted 2,800 sign ups. Marcel Hug will also race alongside David Weir this year and organisers are considering an officially recognised world record attempt. Steve Cram will be the events special guest along with a host of Olympian athletes who will participate in a special race during the event.

## Leisure Centre contract re-let

1.8 Officers are progressing with the procurement for the new sports and leisure facilities contract which is due to commence from 1<sup>st</sup> July 2016.

- 1.9 Five bidders, including all the key contractors operating LA contracts in the south-east, responded to the Pre-Qualification Questionnaire and Four Bidders will be invested to submit 'detailed solutions' which will be evaluated in the Summer.

### **Summer competitions programme**

- 1.10 The annual Athletics competition is one of the largest in the schools calendar attracting over 600 boys and girls from Westminster secondary schools to Battersea Park Athletics Stadium. St George's School and Grey Coat Hospital were finally crowned champions in the boys and girls comps respectively.
- 1.11 Three separate Tennis competitions took place in May at Paddington Recreation Ground and Regents Park, with young people being selected for talent development squads and the chance to represent the City of Westminster at this year's London Youth Games.

### **MCC Lords Schools Offer and Launch event – Monday, 27<sup>th</sup> April**

- 1.12 A successful launch event took place in partnership with MCC, Middlesex, ActiveWestminster and GLL. The launch attracted significant interest from schools and families and generated numerous registrations from participants in the target age range of 9-11 and 11-13 year olds.
- 1.13 The development of this new club session is part of the wider cricket programme, which to date has attracted over 30 schools who are benefitting from coaching on school site, CPD for teachers and access to matches at Lords amongst much more.

## **2. Libraries and Culture**

### **Pimlico Library**

- 2.1 Property Services is in the process of installing a new passenger lift to replace the existing platform lift which has been persistently unreliable. The new lift will be much more suitable for high volume traffic and should provide much greater reliability.

Enabling works were completed in April 2015. There is further work which will be undertaken during the summer holiday period to avoid conflicts with users of the Westminster Adult Education Service.

### **Registration service**

- 2.3 Westminster continues to be very popular for wedding ceremonies held at Mayfair Library, the new partner venue, Asia House and also at an extensive array of venues that are licensed for civil ceremonies across the City. The City Council has recently given approval to its 150<sup>th</sup> venue, the most approved venues of any registration district in the country. The service is getting ready for a busy summer with up to 20 venue weddings taking place on any given Saturday (as well as a potential for 8 at Mayfair Library and 6 at Asia House).

### 3. Volunteering and the Voluntary Sector

#### Team Westminster Flagship Volunteering Service

- 3.1. Westminster City Council has awarded the contract for delivery of the Team Westminster Flagship Volunteering Service to the charity Groundwork London following a thorough procurement process. The three-year contract will begin on 1<sup>st</sup> August 2015 and marks an additional investment of £32,000 per year in volunteering.
- 3.2. The following services will be delivered through the flagship programme:
- **Team Westminster Community Action:** an innovative new addition to the volunteering offer involving a pool of volunteers who can be called on to take part in social action days across the city. We will work with communities to identify activities which matter to local people.
  - **Team Westminster Ambassadors:** the newly named Ambassadors will replace the City Guides and continue to volunteer at some of London's most exciting events. Volunteers will gain skills such as mentoring and team leadership.
  - **Team Westminster Active:** this sports volunteering service will replace 'A City Transformed through Sport.' Sports volunteers will be placed in sports clubs across the city and supported to gain coaching qualifications.
- 3.3. Groundwork London already has strong local partnerships in place, which combined with ambitious plans for the future and an innovative use of technology makes them the ideal organisation to help more people into volunteering. Groundwork London's local community work includes:
- **Westminster Youth Timebank** - Groundwork has been recently funded for the third time to run this programme. Young people have volunteered around the borough, e.g., at local community centres, hospices, and parks to help reduce isolation in older people.
  - **Westminster Community Gardening** - this has been running successfully since 2010, funded by City West Homes and Westminster Adult Education. It has encouraged local communities to get involved with estate improvements on its green spaces.
  - **Westminster Open Spaces Strategy** - Groundwork are currently undertaking a refresher of the Westminster Open Spaces Strategy for Westminster City Council, including surveying the spaces, community engagement and production of the strategy.
  - **Recycling awareness campaign** - in 2008, Groundwork delivered a recycling awareness campaign, covering seven estates in South Westminster. The project resulted in an increase in recycling tonnage and enhanced awareness of the benefits for recycling.

#### Team Westminster Volunteering Strategy Implementation

- 3.4. The Westminster Time Credits Programme will play a key part in achieving the objectives of the Strategy. The contract started 1st April 2015 and it will run for 3 years with a possible extension period of up to 2 years. Spice have begun to mobilise the Time Credits programme in South Westminster. The first step is to recruit a local facilitator who will be directly responsible for running the service, signing up local partners and liaising with officers and local Councillors where appropriate. It is expected that the first Westminster Time Credits will be available for members of the public to earn by July 2015.



#### **4. Parks, Open Spaces and Cemeteries**

##### **Hanging Baskets**

- 4.1. The 'summer planting' hanging baskets have now all been installed – a total of 2,500 baskets citywide. The baskets incorporate pink and red ivy leaf geraniums, pink and orange begonias, and blue and purple surfinia around a central planting of lemon yellow bidens aurea. This selection of plants can thrive even in shaded locations and does not produce any seed heads or retain dead flowers thereby reducing maintenance requirements. Excess foliage will be cut back throughout the summer to ensure parking and highways signs etc. are not obscured. The baskets will remain in place until October/November when they will be swapped for the winter evergreen shrub mix.

##### **St George's Square Gardens**

- 4.2. The refurbishment of the fountain and surrounding planting has now been completed.

##### **Causton Street Play Area**

- 4.3. The new interactive children's splash area has now opened and is proving highly popular.

##### **Giant Chess Sets**

- 4.4. Have been reintroduced in Norfolk Square and Victoria Embankment Gardens

##### **Deckchairs**

- 4.5. The Victoria and Northbank Business Improvement Districts have again sponsored deckchairs in Lower Grosvenor Gardens and Victoria Embankment Gardens for the summer period.

This page is intentionally left blank



City of Westminster

## April 2015 Cabinet Member Update

**Meeting:** *Children, Sport & Customer Services Policy and Scrutiny Committee*  
**Date:** *Prepared in May 2015 based on information as at 30<sup>th</sup> April 2015.*  
**Title:** *City for All, Children and Young People Progress Report*  
**Report of:** *Councillor Chalkley, Cabinet Member for Children and Young People*

### 1 City for All Priorities

**1.1 We will increase the proportion of children in Westminster Primary Schools in 2015 that achieve or exceed Level 4 in Reading, Writing and Mathematics in Standard Attainment Tests [SATs] and sustain the rate of 86%.**

The Primary school Key Stage 2 L4+ results for 2014 were 86% (up from 79% in 2013) which is well above the national average of 79%. Sustaining or exceeding 86% in 2015 would be a good achievement.

**1.2 We will work with and challenge the City's schools to exceed GCSE pass rates of 2014 to 70%.**

The 2014 GCSE pass rates showed that 68% of Westminster pupils achieved 5 grade A\*-C GCSEs, including English and Maths, compared with 70% the previous year. New GCSE arrangements have been introduced and this had a negative impact last year on national and local results. A return to 70% would mark an improvement on 2014 and maintain Westminster's position at well above the national average (53%).

**1.3 We will reward our valued Tri-borough foster carers living in Westminster by helping them ease their financial pressures through a refund of their Council Tax.**

During 2015-16, the target is for 22 (100%) of Tri-borough foster carers living in Westminster to have their Council Tax refunded.

**1.4 We will ensure that at least 80% of children in foster care are placed through the Tri-borough Fostering and Adoption Service.**

In 2014-15, sixty (71%) of the eighty-four children or young people requiring foster care were placed with Tri-borough foster carers. At the end of April 2015, 8 referrals had been received of which 3 children placed and 5 cases on-going.

**1.5 We will ensure that children with placement orders, where possible will be placed with their adopters within 12 months of the court order.**

In 2014-15, of the 17 children with placement orders, 11 (65%) were placed with permanent carers within 12 months of the order.

**1.6 We will improve the health of children and young people by actively promoting Practice Champions in the new primary care services provided through the Connecting Care for Children model and double the number by the end of 2015-16.**

In 2014-15, 10 Practice Champions were recruited from the community. The first update for 2015-16 is due at the end of quarter one.

**1.7 We will improve the quality of social work practice through the innovative Focus on Practice programme, so that the City's social workers are able to effect sustainable improvements with families, children and young people.**

220 members of staff are in scope to attend training. Currently it is only systemic training that has started (Feb 2015). To date, 142 staff are enrolled and taking part in the training currently which equates to 64% of the workforce.

**1.8 We will identify more young carers and ensure 75% of those who need help engage with the support available for them.**

Between April 2014 and March 2015, 59 young people engaged by Spurgeons. The first update for 2015-16 is due at the end of quarter one.

**1.9 We will reduce the number of Westminster resident adolescents (excluding young people accommodated as a result of LASPO Act 2012 or UASC status) aged 14 to 17 years needing to come into care.**

In 2014-15, there were 26 Westminster resident adolescents (excluding UASC status or remand) aged 14 to 17 years needing to come into care. *(2014-15 data is currently being validated as part of year end reporting)*. In April 2015, three entries to care related to young people aged 14 to 17 years of which two were Westminster residents.

**1.10 We will ensure there are sufficient and flexible two year old places to meet demand from eligible families. We will actively market the targeted 2 year offer to increase take up to 80%.**

For spring 2015, the national average take-up of two year old places was 62% and London was the region with the lowest overall take-up (50%). In Westminster take-up was 45% (ranked 24<sup>th</sup> in London). The first update for 2015-16 is due at the end summer term.

**1.11 We will promote school readiness, testing new approaches through the Neighbourhood Community Budget Pilot in Queens Park.** Of all children with a free 2 year old placement our intention is for 95% to have a 2 year assessment by their setting so that early supports plan can be developed. The first update for 2015-16 will be for the summer cohort in August 2015. Our intention is to double the number of parents attending parenting skills training in the 1st year of their child's life and increase the number of specially trained community champions to support access to antenatal, postnatal and primary care in Queens Park. The first update for 2015-16 is due at the end of quarter one.

**1.12 We will ensure that 75% of 2 year olds in Westminster will receive a developmental review.**

In 2014-15, 73.8% of 2 year olds in Westminster received a developmental review. The first update for 2015-16 is due at the end of quarter one.

**1.13 We will increase the percentage of Care Leavers who are in Education, Employment and Training [EET] to 75%.**

In 2014-15, 71% of care leavers were in Education, Employment and Training (EET). The first update for 2015-16 is due at the end of quarter one.

**1.14 Reduce the numbers and percentage of young people resident in Westminster in school years 12, 13 and 14 whose education status is 'not known' to 10%.**

In 2014-15, 577 (15.7%) of young people in school years 12 to 14 had an education status of 'not known'. In April 2015, 462 (12.6%) of young people in school years 12 to 14 had an education status of 'not known'.

- 1.15 We will improve our approach to joint safeguarding with the Police in relation to Child Sexual Exploitation [CSE] ensuring 100% of CSE referrals are jointly investigated by Westminster and Police.**  
In 2014-15, 9 of 9 (100%) of CSE referrals were jointly investigated by Westminster and Police.
- 1.16 We will improve safeguarding actions by Children's Services, Health and Police in relation to FGM.**  
In 2014-15, 34 referrals were received in relation to potential FGM. In April 2015, 3 referrals were received in relation to potential FGM.
- 1.17 We will ensure that children continue to have a choice of nutritious school meals and we will get a better deal, allowing us to put more money back in the classroom.**  
The first update for 2015-16 is due in September 2015.
- 1.18 We will provide an extra 176 primary school and 120 secondary school places in 2015/16, ensuring we keep pace with projected demand.**  
In 2014-15, 420 Primary pupil places were provided and no Secondary school places. The first update for 2015-16 is due at the end of quarter one.
- 1.19 We will train a target number of young people with special educational needs to enable them to travel to and from school independently.**  
In 2014-15, travel trainers worked with ten Westminster children, to enable them to travel to and from school independently. The first update for 2015-16 is due at the end of quarter one.
- 1.20 We will continue to convert SEN statements to EHC plans in line with our published transfer plan.**  
During 2015-16, young people in school years 11, 13 and 14 with special educational needs will have SEN statements converted to EHC plans.
- 1.21 We will build on the successful approaches tried and tested through our Family Recovery Programme to help families with vulnerable children address problems that they may face which stop them getting work.**  
In 2014-15, 7.3% (47 of the 3 year cohort of 640 families) of Westminster residents sustained jobs. The first update for 2015-16 is due in October 2015.
- 1.22 We will provide more support to address criminal activity by young people by giving those leaving custody and those at risk of custody (by the gravity or persistent nature of their offending/associations) the opportunity of working with a mentor for up to 12 months. We will actively increase our pool of volunteer mentors by recruiting throughout the year.**  
In 2014-15, six young people were released from custody and all were offered a mentor, the take up was four (66.6%). Mentoring is offered to all young people leaving custody providing they are below 18 years old. The first update for 2015-16 is due at the end of quarter one.

This page is intentionally left blank



## Children, Sports and Customer Services Policy and Scrutiny Committee

<b>Date:</b>	Monday 8 <sup>th</sup> June 2015
<b>Classification:</b>	General Release
<b>Title:</b>	Sports and Leisure Service Review
<b>Report of:</b>	Director of Community Services
<b>Cabinet Member Portfolio</b>	Cabinet Member for Sports, Leisure and Customer Services
<b>Wards Involved:</b>	All
<b>Policy Context:</b>	City for All / ActiveWestminster Strategy
<b>Report Author and Contact Details:</b>	<b>Richard Barker, Director of Community Services</b> <a href="mailto:rbarker@westminster.gov.uk">rbarker@westminster.gov.uk</a>

### 1. Executive Summary

- 1.1 The following report seeks to provide Members with a high level summary of the sports and leisure offer, with a particular focus on provision for children and young people, including the key service areas, key activities and overall performance.
- 1.2 The report seeks to build on the recent reports which were considered by the Committee concerning the re-procurement of the sports and leisure facilities contract and the development of the Council's new sport and physical activity strategy.
- 1.3 Sports, leisure and physical activity opportunities in Westminster are delivered through a mixed economy of voluntary, public, private and charitable organisations. The Council's Sports and Leisure team play a key brokerage, developmental and commissioning role in coordinating, promoting and developing the overall offer to ensure the best possible opportunities are available to meet the needs of Westminster's diverse communities.
- 1.4 The service generates approximately £13.5m in revenue income and attracts over 4 million visits to facilities and services every year.

1.5 Overall, performance during 2014/15 has been very positive and particular highlights include:

- 3,921,313 visits have been made to our sports and leisure centres which surpassed the full year target and represents the highest figure ever recorded.
- 33,184 visits to the Sayers Croft Centre (surpassing the full year target)
- 145,000 swimming lessons delivered which exceeds the annual target and represents a 45% increase in uptake compared with the previous year. This is an extremely positive result and follows a change in the operational arrangements (lessons are now delivered directly by GLL)
- 7,269 ActiveWestminster Passport and Concession card holders across all facilities (full year target achieved).
- 8,110 participants engaged in the exercise referral scheme
- 120 registered athletes on the 'Champions of the Future Programme' (full year target achieved)
- 65 accredited sports clubs in Westminster through the 'ActiveWestminster Mark' programme (full year target achieved).
- 72,442 participants in sports development programmes (80% of the full year target)

## 2. **Key Matters for the Committee's Consideration**

It is recommended that:

- (a) Members consider the overall offer promoted by the sports and leisure service
- (b) Members provide feedback to Officers to help shape the further development of the offer to ensure the needs of residents, visitors and stakeholders are met where at all possible

## 3. **Background- key service areas & key issues**

### **Key Service Areas**

3.1 The core areas of the sports and leisure service include:

- Sports and leisure facilities
- PE and School Sport
- Sports development
- Outdoor Learning (including the operation of the Sayers Croft Centre)

#### **3.1.1 Sports and Leisure facilities**

The Council is responsible for overall management of its own sports and leisure facilities including policy and service development and the development and implementation of the capital programme.



The Council also takes an active role in developing community use and opportunities of other facilities including promoting:

- community use of sports facilities in schools
- community use of private / external partner facilities (e.g. Lords, the Royal Parks, Imperial College, Jubilee Halls Trust)
- sports and physical activity opportunities in parks and open spaces and in City estates
- sports and physical activity opportunities in other community venues including children's centres and libraries

A significant 'mixed economy' of community sports and leisure facilities has been developed through the ActiveWestminster strategy and the Council aims to promote the best access to community sports facilities in the country. The current map of sports facility provision is shown as **Appendix 1**.

### **3.1.2 Sports Development and PE & School Sport**

The Council's Sports Unit seek to promote, facilitate, develop and deliver innovative, high quality sports and physical activity programmes and consists of 3 key work areas: PE and School Sport, Sports Development (Participation) and Sports Development (Progression).

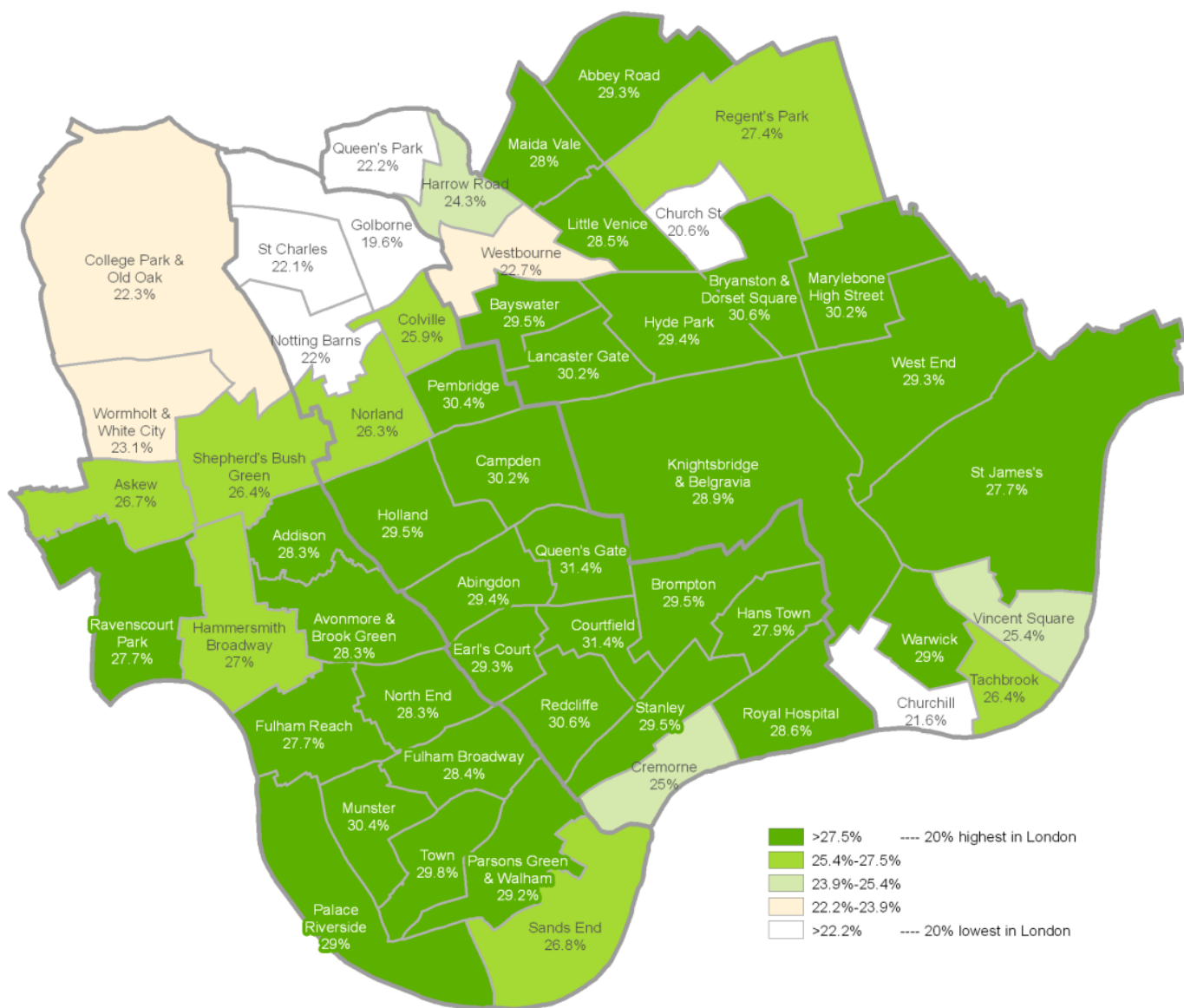
The Sports Unit team also work extremely closely with Public Health, particularly through the Physical Activity agenda.

### **3.1.3 Outdoor Learning Unit**

The unit's responsibilities include the management of Sayers Croft Outdoor Education Centre located in Ewhurst, Surrey. The centre has access to a 56 acre shared landholding within the site offering residential accommodation for 200 visitors and is mostly used by school groups.

## **Key Issues**

- 3.2 The offer promoted by the service seeks to address the key issues regarding sport and physical activity, particularly the impact of inactivity on the health and wellbeing of residents which is a particular issue in areas of high deprivation as illustrated in **Figure 1**.



**Figure 1** - Ward estimates of percentage of adults aged 16 years or older who participate in 30 minutes of moderate intensity sport or active recreation at least 3 times per week

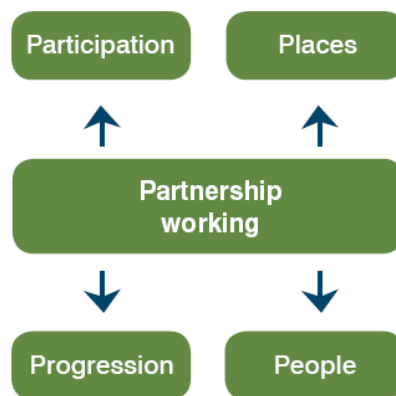
3.3 The sports and leisure offer also directly aligns with the key themes within the Council's ActiveWestminster Strategy- 'Participation', 'Places', 'Progression', 'People' and 'Partnership'

**Figure 2 - ActiveWestminster strategy framework**

ActiveWestminster works to improve opportunities which encourage those who live, work and study in Westminster to participate in sport and physical activity.

**Shared Vision**

To see a measurable improvement in the health and wellbeing of people who live, work and study in Westminster by encouraging them to participate in sport and physical activity and to acquire new skills through high quality casual and competitive activities.



<p style="text-align: center;"><b>‘Participation’</b></p> <p><b>Objective</b> Provide and promote more sport and physical activity opportunities for all members of our community.</p> <p><b>Strategic Priorities</b></p> <ul style="list-style-type: none"> <li>▪ Mapping, communication and action planning, particularly for low participation groups</li> <li>▪ Encouraging those who are active to do more and influence others</li> <li>▪ Engaging and working with communities in deprived areas</li> </ul> <p><b>Success Measures</b></p> <ol style="list-style-type: none"> <li>1. % increase in participation in sport and physical activity</li> <li>2. Narrowing of the gap between participation levels for the population as a whole and low participation groups</li> </ol>	<p style="text-align: center;"><b>‘Places’</b></p> <p><b>Objective</b> Increase and extend the range and quality of sports facilities, active places and spaces and services and programmes, available in the locations where they are most needed.</p> <p><b>Strategic Priorities</b></p> <ul style="list-style-type: none"> <li>▪ Facility planning and influencing new development</li> <li>▪ Widening access and optimising the use of active places</li> <li>▪ Targeting interventions in deprived areas</li> </ul> <p><b>Success Measures</b></p> <ol style="list-style-type: none"> <li>3. % improvement in community access to sports and leisure facilities</li> <li>4. % improvement in resident satisfaction levels for sport and leisure facilities</li> <li>5. Number of parks and open spaces offering opportunities for active recreation</li> </ol>
<p style="text-align: center;"><b>‘Progression’</b></p> <p><b>Objective</b> Increase locally available competitive opportunities for people to develop their sporting skills and improve the sporting ‘pathways’ from playgrounds to podiums.</p> <p><b>Strategic Priorities</b></p> <ul style="list-style-type: none"> <li>▪ Increase the number and quality of clubs</li> <li>▪ Develop competitive opportunities</li> <li>▪ Support the achievement of excellent performance</li> </ul> <p><b>Success Measures</b></p> <ol style="list-style-type: none"> <li>6. Number and breadth of accredited clubs</li> <li>7. % increase in participation in competitions</li> <li>8. Number of young people benefiting from the Champions for the Future Programme</li> </ol>	<p style="text-align: center;"><b>‘People’</b></p> <p><b>Objective</b> Increase ‘workforce’ capacity through the development of volunteering, education, training and employment opportunities throughout the sport and active leisure sector.</p> <p><b>Strategic Priorities</b></p> <ul style="list-style-type: none"> <li>▪ Promote and support volunteering</li> <li>▪ Promote and support coaching</li> <li>▪ Training and career development</li> </ul> <p><b>Success Measures</b></p> <ol style="list-style-type: none"> <li>9. % increase in volunteering in sport and physical activity</li> <li>10. Number of people in vocational training and apprenticeship programmes</li> </ol>
<p style="text-align: center;"><b>‘Partnership Working’</b></p> <p><b>Objective</b> Encourage partners to pledge their commitment to ActiveWestminster, deliver the strategy and pursue joint programmes.</p> <p><b>Strategic Priorities</b></p> <ul style="list-style-type: none"> <li>▪ Effective operating structure</li> <li>▪ Agreement and implementation of the ActiveWestminster delivery plan</li> <li>▪ Encourage partner contributions, attract and target funding opportunities</li> </ul> <p><b>Success Measure</b></p> <ol style="list-style-type: none"> <li>11. Number of active partners positively contributing to the ActiveWestminster Partnership</li> </ol>	

#### 4. The Sports & Leisure Offer

- 4.1 The ActiveWestminster Guide (pictured right) provides a full listing of activities and programmes provided by the sports and leisure service and is available in schools, Council venues, community buildings and on line (visit [www.westminster.gov.uk/sports](http://www.westminster.gov.uk/sports)).



#### Sports and leisure facilities

- 4.2 The Council's sports and leisure facilities offer a wide range of programmes and activity opportunities at children and young people including:

- **Free Swimming & Learn to Swim.** In addition to discounted fees and charges for a variety of memberships and activities, free swimming is also available to children and young people under 19 years of age that either study or live in Westminster. The 'Learn to Swim' programme delivered over 145,000 swimming lessons in 2014/15 which exceeds the annual target and represents a 45% increase in uptake compared with the previous year.
- **Coaching programmes and club activity.** The facilities promote a wide range of coaching programmes including tennis, athletics, swimming, basketball, hockey and cricket and host a variety of club activities, often in partnership with National Governing Bodies (NGBs) of Sport.
- **Early Years.** A key programme of activity is specifically designed for early years, as studies have shown that engaging children in sport and physical activity at an early age helps support long lasting habits for life and also develops important motor skills that impact on general development. The weekly programme of activities for young children includes 'waterbabies' swim activities, children's yoga and music and movement.
- **Holiday Programmes.** An extensive programme of sports camps are provided for children and young people during school holiday periods. Paddington Recreation Ground (among other sites) delivers a highly successful programme, which attracts over 180 participants a day including cricket, basketball, tennis and football.

#### PE and School Sport

- 4.3 The Council's overall PE and School Sport offer is encapsulated within a comprehensive menu of services which have been developed in partnership with schools and includes:

- **An annual competitions programme** which provides around 300 competition fixtures each year and engages around 7,000 participants.

- **PE and School Sport 'health checks'** which provide focused support to improve the quality and quantity of PE and School Sport.
- A **Continued Professional Development (CPD)** programme for teachers and coaches who work in schools.
- A **Leadership Academy** for around 50 older students each year which provides leadership training and opportunities to develop skills in coaching and sports management.
- A **Satellite Sports Clubs programme** utilising schools facilities for community sports activities for children and young people.

4.4 The vast majority of Westminster schools (95%) are actively engaged in the programme and participation is extremely positive. Details of the offer to schools are provided in **Appendix 2**.

### **Sports Development – 'Participation'**

4.5 The 'participation' strand of sports development seeks to promote a well-designed community sport and physical activities in accessible settings to encourage residents to be more active, more often. Key programmes include:

- **'Edutain'** - the Edutain holiday programme (which means to 'EDUcate' and 'enterTAIN'), is a multi-sports & arts based programme for young people aged 8 –13 years old. The costs just £1 per person per day and is delivered at 3 sites across Westminster during school holidays.
- **Specific activities and programmes for 'low participation groups'** including those with limiting disabilities, older people and women and girls.
- **Vocational training programmes** providing coaching courses for young people wishing to develop a career in sport.
- A range of participation programmes are commissioned and managed by the Sports Unit including a new **'ParkMakers' programme** which promotes physical activity opportunities in parks and open spaces.
- **Health and Wellbeing Programmes** including a free to access GP exercise referral programme which attracted over 8,000 participants during 2014/15.
- **The Neighbourhood Sports Club Programme.** A flagship 'door-step' programme of over 120 hours of free sports activities 'in the right place at the right time' creating opportunities for young people to be healthy, stay safe, enjoy, achieve and make a positive contribution. A significant focus of the programme is placed on deterring young people from engaging in anti-social behaviour or criminal activities as well as providing a positive 'reactive' response to young people who may be involved in gang activities,

pupil referral placements and/ or not being in education, employment or training.

- **'Unity in the Community' Tournaments** provide a competitive opportunity for children and young people which brings together regular football sessions delivered through the Neighbourhood Sports programme. The programme attracts young people from different estates and parts of the City on a regular basis to help to reduce conflict and youth related violence / anti-social behaviour.
- **Participatory events** including the 'Westminster Mile' which will attract over 6,000 participants in 2015.

### **Sports Development- 'Progression'**

4.6 The 'progression strand of sports development seeks to provide support and assistance for those wishing to develop their skills and competitive ability in sport. Key programmes include:

- **The ActiveWestminster Mark** club development programme which seeks to develop the quantity and quality of sports clubs in Westminster. Appendix 3 details over 60 clubs that are accredited through this programme which recognises a specific level of quality. Clubs benefit from a variety of events, discounts at facilities and a number of commissioned activities which are promoted through the sports unit.
- **A Schools Competition Programmes** which attracted over 12,000 participants during 2014/15.
- **School Games and London Youth Games** which engages over 5,000 participants in a variety of competitive sports opportunities' throughout the year.
- **A Sports Volunteering programme** which provides a brokerage service between interested volunteers and voluntary sports clubs. Over 195 volunteers were engaged through the programme in 2014/15.
- **A Champions for the Future programme** which provides mentoring and financial support to over 120 young talented athletes in Westminster to assist with training, travel and equipment. The programme is split into various levels of achievement and support from regional to ambassador and the programme seeks to work very closely with each young person as they develop through the performance pathway. There are numerous success stories which have been realised through this flagship programme, which includes the three athletes below who all grew up and went to school in Westminster:
  - ***Tin-Tin Ho- table tennis.*** Now 16 years old, Tin-Tin previously represented Westminster at the London Youth Games and more recently won a silver medal at the 2014 Commonwealth Games.

- **Melita Emanuel Carr- basketball.** *One of the most promising female Basketball players ever to be identified in Westminster, Melita has coached and mentored many other young players in Westminster schools and is now continuing her Basketball and education in America and a familiar face in the GB team.*
- **Ashley McKenzie- judo.** *Ashley has become somewhat of a celebrity, having competed at London 2012, starred on the TV show Big Brother and been a special guest at the Council's ActiveWestminster Awards. Having grown up in Queens Park Ashley used the sport of Judo to divert his attention away from other more antisocial activities. Ashley won the Gold medal at the 2014 Commonwealth Games in the 60kg category and now has his sights set on the Olympic Games in Rio next year.*

## Outdoor Learning

- 4.7 The core programme of outdoor learning activities takes place at the Council's Sayers Croft Centre, which is based in Ewhurst Surrey.
- 4.8 Sayers Croft is a 56-acre outdoor adventurous activity facility that can accommodate 200 visitors and attracted over 33,000 visitors during 2014/15.
- 4.9 In addition to the core programme of outdoor learning activity at the Sayers Croft Centre, Officers have focused on outreach activity within Westminster itself, which includes the following programmes:
- **Forest Schools.** The 'Forest Schools' programme focuses on child-led learning, providing participants ownership over the outdoors area during their visits. It allows children to be independent, explore the environment and discover nature. A pilot scheme of forest school sessions has commenced at Paddington Recreation Ground which has been extremely well received by schools. School classes visit the park to experience the different seasons whilst exploring the habitats and wildlife in the environmental area.
  - **Orienteering.** A six week programme of activity for schools to teach and develop the skills of orienteering with years 3 to 6.
  - **Duke of Edinburgh Scheme.** Sayers Croft provides residential weeks for 'Silver' participants during school holidays throughout the year. Participant, are aged from 16-25 and take part in a mixture of adventurous activities (e.g. zip wire, high ropes and caving) and conservation (e.g. constructing fences in the surrounding woodland and planting trees). The programme attracts over 170 participants each year.

## 5. Progress and outcomes

- 5.1 A number of significant achievements have been delivered up to and including 2014/15 which has made a positive contribution towards ActiveWestminster and wider Council and Partner outcomes. These can be best summarised using the ActiveWestminster Partnership's "5 P's":

### **Participation**

- Overall participation in sport and physical activity continues to increase and Westminster is now the 5th most active borough in London.
- Over 2,700 children and young people are taking advantage of free swimming and discounted activities through the ActiveWestminster Passport.
- The swimming lessons programme has been extremely popular with over 145,000 lessons delivered in 2014/15, a 60% increase on 2013/2014.
- A pilot of the flagship Active Communities programme has been delivered which seeks to better connect services and activities at a neighbourhood level.

### **Places**

- Over 3.6 million visits to the Council's sports and leisure facilities have been achieved during 2014/15 - the 2<sup>nd</sup> year in a row that the highest figure has been surpassed.
- Major re-developments. Significant progress has been made with a planned regeneration of Moberly and Jubilee Sports Centres with phase 1 of the programme delivered and planning permissions for phase 2 achieved.
- Parks and Open Spaces. The number of new 'ParkMakers' sessions per week has increased and continues to promote free active recreation in parks and open spaces.
- A new caving complex was delivered at the Council's Sayers Croft Centre to further diversify the offer of activities at the centre for visitors.
- The sports and leisure capital programme was delivered to time and to budget which has resulted in a number of significant improvements to facilities, in particular a major improvement to the reception, health and fitness and changing facilities at the Queen Mother Sports Centre and a new games area and outdoor gym at Queens Park Gardens.

### **Progression**

- Community sports clubs. 65 clubs have now achieved the ActiveWestminster Mark accreditation which demonstrates a good level of quality and community access.
- School Games – Almost 2,500 children took part in school games competitions in 2014/15, a 45% increase on the target.
- Talented athletes. Over 120 young people continue to benefit from the Council's Champions of the Future programme.
- The chart below shown as **Figure 3** illustrates that Westminster has generally high levels of participation in competitive sport compared to both the London and England averages.



Understanding key performance indicators - KPI2, KPI3, KPI4 and KPI5

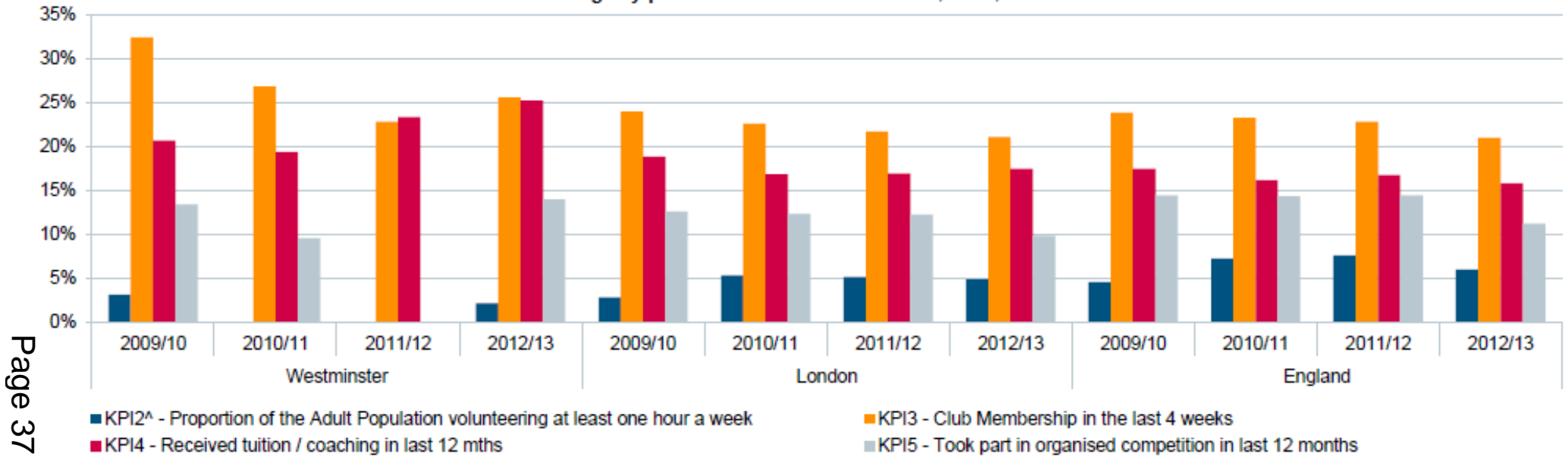
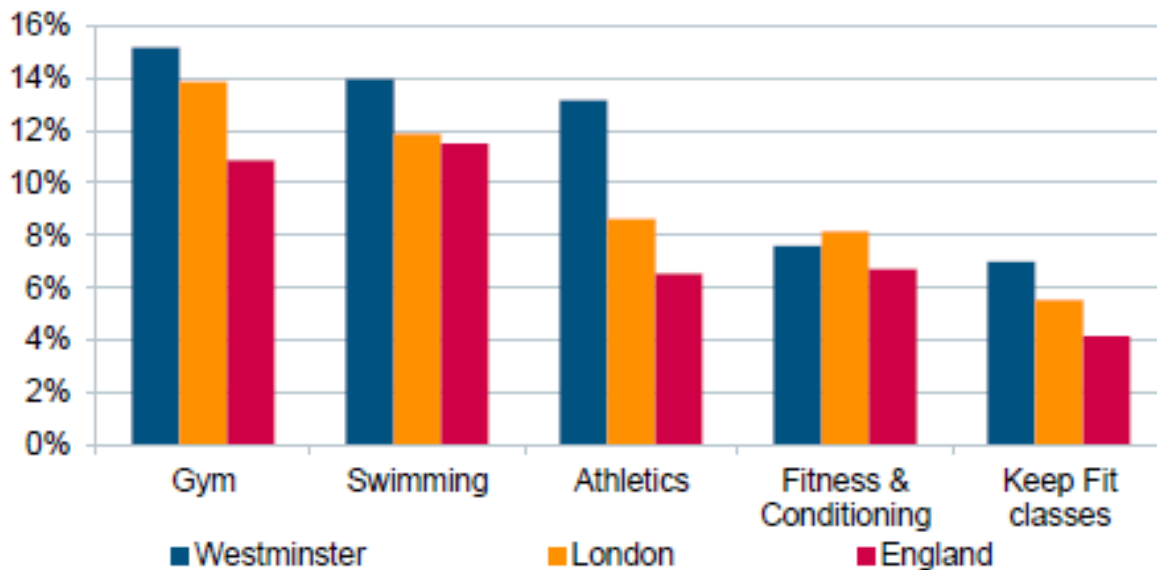


Figure 3 – Levels of adult participation in comparison to London and England, Sport England Active People Survey 7

- Similarly, **Figure 4** illustrates that a greater number of Westminster residents take part in Gym, Swimming, Athletics and fitness sports compared to the regional and England averages.



**Figure 4** – Participation rates in top 5 Local Authority Sports, with regional and England comparisons, Sport England Active People Survey 7.

### People

- 7 Sports and Leisure apprentices were recruited through the programme in 2014/15.
- Volunteering- over 175 volunteers were recruited and trained as part of the Council’s flagship sports volunteering programme.
- A comprehensive programme of Professional Development programme has been delivered to 100 teachers and sports coaches in schools.
- Leadership Academy – 125 young leaders have participated in the training programme.

### Partnership

- Almost every Westminster school has subscribed to the PE and School Sports programme for 2015-16.
- Quality accreditations. A number of high profile national quality accreditations have been secured including the Sport England QUEST accreditation for sports development services and sports centres, the ‘Learning Outside the Classroom’ award for Sayers Croft.
- Little Venice Sports Centre was awarded the highly acclaimed UKActive Flame award ‘Leisure Centre of the Year – Streamline’, and The Westminster Sports Unit being awarded ‘Excellent’ rating for sports development, the first team in London.
- ActiveWestminster Awards and Active Weekend. An extremely successful awards event took place at Lords in November 2014. The event attracted over 350 nominations and in excess of 200 attendees.

- The second Westminster Mile event took place in May 2014 and attracted over 5,800 registered participants. Plans are in place to deliver the third event in 2015 which will attract over 6,000 participants.

## **6. Summary**

- 6.1 The briefing note provides a summary of the work of the Council's sports and leisure service and the overall offer in place.

## **7. Health and Wellbeing Implications**

- 7.1 The work of the sports and leisure service has a direct and positive impact on improving health and wellbeing of residents and visitors and aligns strongly with the Council's health and wellbeing agenda.

## **8. Financial Implications**

- 8.1 There are no financial implications associated with this report.

## **9. Risks and Mitigations**

- 9.1 The risk management implications relating the sports and leisure offer are identified and managed through the Sports and Leisure service risk assessment matrix which is monitored regularly and reported corporately.

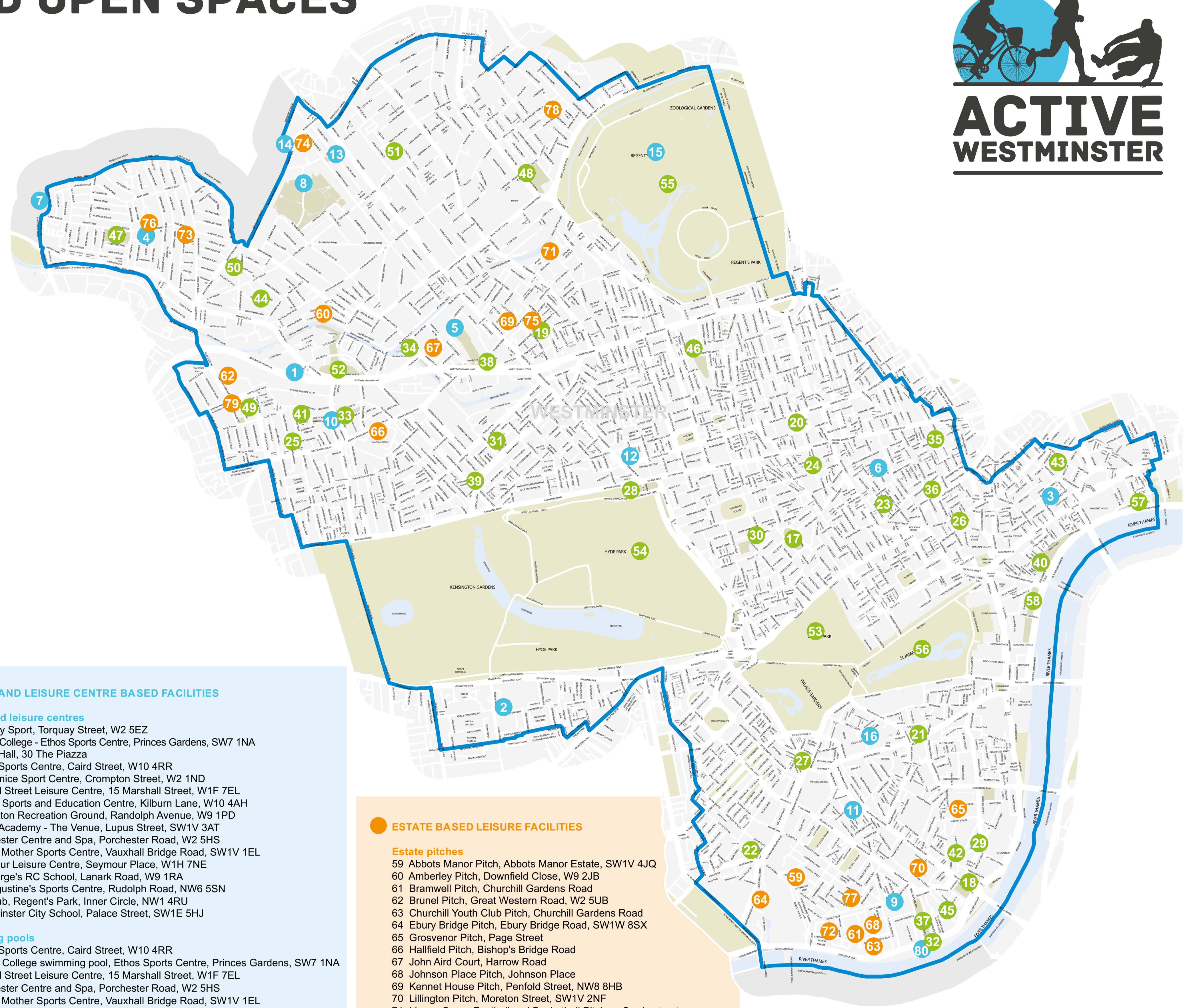
**If you have any queries about this Report or wish to inspect any of the Background Papers please contact Richard Barker**  
[rbarker@westminster.gov.uk](mailto:rbarker@westminster.gov.uk)

## **BACKGROUND PAPERS**

- **Appendix 1.** A Map of Sports and Leisure Facilities, separate attachment
- **Appendix 2.** The PE and School Sport Offer- Westminster PE & School Sport Network 2014/15
- **Appendix 3.** Current list of ActiveWestminster Mark clubs and providers

This page is intentionally left blank

# SPORTS, LEISURE AND OPEN SPACES IN WESTMINSTER



## PARK BASED LEISURE FACILITIES

### Basketball courts

- 43 Drury Lane Garden, Martlett Court, WC2B 5SQ
- 45 Trinity Mews Multi-Use Games Area, Bessborough Place, SW1P 4AT
- 47 Queen's Park Gardens, Third Avenue, W10 4RQ

### Football pitches

- 8 Paddington Recreation Ground, Randolph Avenue, W9 1PD
- 43 Drury Lane Garden, Martlett Court, WC2B 5SQ
- 45 Trinity Mews Multi-Use Games Area, Bessborough Place, SW1P 4AT
- 47 Queen's Park Gardens, Third Avenue, W10 4RQ

### Parks and open spaces

- 17 Berkeley Square Gardens, Berkeley Square, W1J 6EB
- 18 Bessborough Gardens, Bessborough Gardens, SW1V 2JQ
- 19 Broadley Street Gardens, Broadley Street, NW8 8BN
- 20 Cavendish Square Gardens, Cavendish Square, W1G 9DB
- 21 Christchurch Gardens, Victoria Street, SW1H 0AY
- 22 Ebury Square Gardens, Ebury Square
- 23 Golden Square Garden, Golden Square, W1F 9HW
- 24 Hanover Square Garden, Hanover Square, W1S 1HP
- 25 Kildare Gardens, Kildare Gardens, W2 5JS
- 26 Leicester Square, WC2H 7LE
- 27 Lower / Upper Grosvenor Gardens, Buckingham Palace Road, SW1W 0QP
- 28 Marble Arch Green Areas, Marble Arch, W1H 7AP
- 29 Millbank Garden, John Islip Street
- 30 Mount Street Garden, Mount Street
- 31 Norfolk Square Garden, Norfolk Square, W2 1RU
- 32 Pimlico Gardens, Grosvenor Road, SW1V 3QY
- 34 Rembrandt Gardens, Warwick Avenue, W9 2PT
- 35 Soho Square Garden, Soho Square, W1D 3QH
- 36 St Anne's Churchyard, Wardour Street, W1F 0UN
- 37 St George's Square Gardens
- 38 St Mary's Churchyard, Paddington Green, W2 1LG
- 39 Sussex Gardens, Sussex Gardens, W2 3UA
- 40 Victoria Embankment Gardens, Villiers Street, WC2N 6ND
- 41 Westbourne Gardens, Durham Terrace, W2 5PB

### Parks with playgrounds

- 33 Porchester Square Gardens, Porchester Square, W2 6AL
- 42 Causton Street Playground, Causton Street, SW1P 4AU
- 43 Drury Lane Garden, Martlett Court, WC2B 5SQ
- 44 Edbrooke Road, Edbrooke Road, W9 2DE
- 45 New Trinity Mews Playground, Bessborough Place, SW1P 4AT
- 46 Paddington Street Gardens, Paddington Street, W1U 4HE
- 47 Queen's Park Gardens, Third Avenue, W10 4RQ
- 48 St John's Wood Church Grounds, Wellington Place, NW8 7PF
- 49 St. Stephens Gardens, St Stephen's Gardens, W2 5RY
- 50 Tamplin Mews Open Space, Chippenham Road, W9 3LR
- 51 Violet Hill Gardens, Violet Hill
- 52 Westbourne Green Open Space, Harrow Road, W2 5TQ

### Royal parks

- 53 Green Park, Piccadilly, W1V 9HA
- 54 Hyde Park / Kensington Gardens, Serpentine Road, W2 2UH
- 55 Regent's Park, Inner Circle, NW1 4RU
- 56 St. James Park, The Mall, SW1A 1AA

### Outdoor table tennis facilities

- 8 Paddington Recreation Ground, Randolph Avenue, W9 1PD
- 20 Cavendish Square Gardens, Cavendish Square, W1G 9DB
- 23 Golden Square Garden, Golden Square, W1F 9HW
- 29 Millbank Garden, John Islip Street
- 37 St George's Square Gardens
- 40 Victoria Embankment Gardens, Villiers Street, WC2N 6ND
- 46 Paddington Street Gardens, Paddington Street, W1U 4HE
- 47 Queen's Park Gardens, Third Avenue, W10 4RQ
- 48 St John's Wood Church Grounds, Wellington Place, NW8 7PF
- 57 Temple Gardens, EC4Y 9BB
- 58 Whitehall Gardens

### Outdoor gym equipment

- 29 Millbank Garden, John Islip Street

## SPORTS AND LEISURE CENTRE BASED FACILITIES

### Sports and leisure centres

- 1 Academy Sport, Torquay Street, W2 5EZ
- 2 Imperial College - Ethos Sports Centre, Princes Gardens, SW7 1NA
- 3 Jubilee Hall, 30 The Piazza
- 4 Jubilee Sports Centre, Caird Street, W10 4RR
- 5 Little Venice Sport Centre, Crompton Street, W2 1ND
- 6 Marshall Street Leisure Centre, 15 Marshall Street, W1F 7EL
- 7 Moberly Sports and Education Centre, Kilburn Lane, W10 4AH
- 8 Paddington Recreation Ground, Randolph Avenue, W9 1PD
- 9 Pimlico Academy - The Venue, Lupus Street, SW1V 3AT
- 10 Porchester Centre and Spa, Porchester Road, W2 5HS
- 11 Queen Mother Sports Centre, Vauxhall Bridge Road, SW1V 1EL
- 12 Seymour Leisure Centre, Seymour Place, W1H 7NE
- 13 St George's RC School, Lanark Road, W9 1RA
- 14 St. Augustine's Sports Centre, Rudolph Road, NW6 5SN
- 15 The Hub, Regent's Park, Inner Circle, NW1 4RU
- 16 Westminster City School, Palace Street, SW1E 5HJ

### Swimming pools

- 4 Jubilee Sports Centre, Caird Street, W10 4RR
- 2 Imperial College swimming pool, Ethos Sports Centre, Princes Gardens, SW7 1NA
- 6 Marshall Street Leisure Centre, 15 Marshall Street, W1F 7EL
- 10 Porchester Centre and Spa, Porchester Road, W2 5HS
- 11 Queen Mother Sports Centre, Vauxhall Bridge Road, SW1V 1EL
- 12 Seymour Leisure Centre, Seymour Place, W1H 7NE

## OUTDOOR SPORTS AND LEISURE FACILITIES

### Boating Facilities

- 80 Westminster Boating Base, 136 Grosvenor Road, SW1V 3JY

## ESTATE BASED LEISURE FACILITIES

### Estate pitches

- 59 Abbots Manor Pitch, Abbots Manor Estate, SW1V 4JQ
- 60 Amberley Pitch, Downfield Close, W9 2JB
- 61 Bramwell Pitch, Churchill Gardens Road
- 62 Brunel Pitch, Great Western Road, W2 5UB
- 63 Churchill Youth Club Pitch, Churchill Gardens Road
- 64 Ebury Bridge Pitch, Ebury Bridge Road, SW1W 8SX
- 65 Grosvenor Pitch, Page Street
- 66 Halffield Pitch, Bishop's Bridge Road
- 67 John Aird Court, Harrow Road
- 68 Johnson Place Pitch, Johnson Place
- 69 Kennet House Pitch, Penfold Street, NW8 8HB
- 70 Lillington Pitch, Moreton Street, SW1V 2NF
- 71 Lisson Green Football and Basketball Pitches, Swain street
- 72 Lutyens/ Chippendale Pitch, Churchill Gardens Road
- 73 Lydford Pitch, Ashmore Road
- 74 Maida Vale Pitch, Randolph Gardens, NW6 5XB
- 75 Medway House Pitch, Penfold Street
- 76 Mozart Estate Pitch, Jubilee Sports Centre, Caird Street, W10 4RR
- 77 Russell House Pitch, Cambridge Street
- 78 Townshend Pitch, NW6 6JS
- 79 Wessex Gardens, Wessex Gardens Estate, W11 1DS



This page is intentionally left blank

## **Appendix 2- Westminster Sports Unit's Offer to Schools (14/15)**

**Westminster Sports Unit** is uniquely placed to offer a comprehensive service to schools at the best possible value. We are able to broker quality services from partners in education, sport and physical activity to help develop and deliver a full PE and school sport offer to your school. The team has the support of two dedicated Sports Development Officers and unlike commercial providers, there is no premium to cover the cost of overheads or profit margins.

In 2014/15 primary schools will once again receive **a sum of £8000 per school plus and an extra £5 top-up per pupil as they did in September 2013 from Central Government.**

### **Reporting & Ofsted Arrangements**

As you'll be aware, to compliment this funding there will also be **tougher assessment of PE and sport provision via Ofsted** to ensure the funding is bringing the maximum benefit for all pupils, with schools held to account for all expenditure. This will ensure that schools are clear about how PE and sport will be assessed in future as part of the overall provision offered by the school. Schools have the discretion to spend this money as they see appropriate for their school but it must be used for PE and school sport. Guidelines for spending this funding will be made available.

### **A New Offer**

The uptake from schools for the Westminster PE and School Sport Membership for 13/14 was excellent with 95% schools participating. We want to make sure the membership continues to offer excellent value for money and remains relevant and attractive for schools. Following consultation with Westminster's Head Teacher Executive and PE Subject Leaders, we have revised the last years offer to provide a more focused membership package that reflects the priorities and needs of our schools, whilst continuing to offer some optional but enhanced services.

We have built excellent relationships with a number of partners and PE professionals over the last 10 years that has enabled us to broker high quality support at minimal cost. In turn we are able to offer a membership package that is much lower than the real cost and therefore is a relatively small contribution taken from your allocated PE premium funding towards improving the amount of high quality PE and school sport in Westminster.

### **Westminster PE & School Sport Membership Package - £490**

1. **Annual primary school sport competitions calendar & online entry**, including School Games level 2 competitions, entry and transportation to School Games level 3 where appropriate and many locally requested competitions and festivals
2. **NQT training & support** – As part of Westminster NQT induction programme, the PE training days offer new teachers practical ideas and importantly ongoing support to teach and observe high quality PE back within the school environment

3. **CPD and teacher training programme** – an expanded annual teacher training programme of sport specific and generic courses aimed at supporting class teachers and coaches to deliver high quality PESS.
4. **PE and school sport health check** – audit of PE and School Sport in your school to gauge the current quality of the offer, suggest improvements and set targets conducted by an education specialist/PE advisor
5. **PE Ofsted support** – an extension to the health check, the Ofsted support will use the subject specific descriptors to aid schools in their preparation for Ofsted
6. **PE network meetings & Review Day (inc CPD sessions)** – three half day meetings and annual PE and School Sport review day.
7. **Support to gain the School Games Mark** – a member of the WSU team will spend time in the school helping teachers to understand which criteria they meet (bronze, silver or gold) and develop a plan to reach the next level.
8. **Leadership Academy** – using the School Sport Organising Crews programme from the Youth Sport Trust, primary schools will be given resources to develop young leaders in their school to become a helpful PE and school sport workforce
9. **Healthy Schools Partnership** – support and guidance to member schools to provide greater physical activity opportunities, this might include establishing a midday supervisor programme for break and lunch times, zoning the playground and breakfast clubs. Programmes such as this will be developed in partnership with Healthy Schools and Physical Activity lead officers
10. **PE safety membership** – [www.PEsafety.com](http://www.PEsafety.com) access to this invaluable website gives a 24hour response to any question schools might have regarding safety in PE and school sport. The site is managed by two physical and outdoor education specialists
11. **Annual online school sport survey** – opportunity to feedback on progress made during the year and indicate your schools key areas of required support for the coming year
12. **E-Newsletters ‘School Link’** - published each term with key information and upcoming dates

### **Westminster PE & School Sport Enhanced Services**

(The below programmes and services have individual prices to allow schools the option to pick and mix)

- a) **Level 1 School Games support** – schools will receive support on one day per term to ensure that every pupil in their school is taking part in level 1 competition (£450)
- b) **Leadership Academy** – in the enhanced package, WSU will be able to come into your school and train and develop the SSOCrew ready for deployment for your activities (£150)
- c) **Primary Schools Youth Sport Trust membership** – membership to the Youth Sport Trust provides schools with additional resources and discounts to their services (£300)



### **Additional Services**

Beyond the membership package, schools are expected to use the remaining PE premium funding to add value to PE and School Sport. Therefore, working in partnership with London Sport (regional sport and physical activity body funded by Sport England) we would be happy to broker and coordinate the arrangements on your behalf with regards to buying in additional services.

This may include:

- **Support with PPA cover and team teaching** – we only use accredited providers through the ActiveWestminster Mark which assesses providers against criteria for minimum operating standards
- **Recruitment of specialist PE teachers** – this could be a shared post between schools by pooling a proportion of funding, a model which some schools are opting for
- **Apprentice PE Assistant** - The National School Apprenticeship programme offers a unique opportunity for primary schools to employ a full-time PE assistant
- **Improved links with NGBs** of sport and their schools offer to develop school club links
- **Satellite sports clubs** these will offer open community sessions based at hub school sites

**Any bespoke service** that you may require specific to school needs such as whole school INSET training

This page is intentionally left blank

### Appendix 3. Current list of ActiveWestminster Mark clubs and providers

<b>Sport/ Activity</b>	<b>Club/ Organisation</b>
Aquatics	Chelsea and Westminster Swimming Club
Aquatics	NoTanx
Badminton	Black Arrows Badminton Club
Basketball	Westminster Warriors
Basketball	The Badabings Basketball Club
Basketball	London Basketball Association
Boxing	All Stars Boxing Club
Climbing	High Sports - West 1
Cricket	Regents Park Cricket club
Cricket	Capital Kids Cricket
Dance/Cheerleading	Unique Dynamites
Dance	Hypnotick
Dance	Union Dance
Dance	Freshly Squeezed
Dance	Dance Fusion
Disability Multisports	Zodiac Arts
Exercise & Fitness (50+)	Silverfit
Exercise & Fitness (50+)	Open Age
Exercise & Fitness (Women)	Green Talent - Fitness For Women
Exercise & Fitness	Pimlico Fitness
Fencing	Salle Boston Fencing Club

<b>Sport/ Activity</b>	<b>Club/ Organisation</b>
Football / Multisports	Arsenal in the Community
Football / Multisports	Chelsea FC
Football / Multisports	Queens Park Rangers FC
Football	Regents Park Rangers Ladies FC
Football	CityWest Leisure Limited
Football	Sport London e Benfica FC
Football	Aslan FC
Football	London Tigers
Football	Little Kickers
Football	Pro Touch Soccer Academy
Football	Hilal Rangers FC
Gymnastics	Westminster Gymnastics Club
Martial Arts, Cycling, Running	Kyu Yo Bu Shin
Martial Arts	Shentie Martial Arts Academy
Martial Arts (karate, freestyle karate and mixed martial arts)	Martial Art Fitness
Martial Arts	Zhen Wei Academy
Martial Arts (judo)	Moberly Judo Club
Multisports	SportWestminster CIC
Multisports	The Fourth Feathers Youth Club
Multisports	St Andrews Youth Club
Multisports	The Avenues Youth Project

<b>Sport/ Activity</b>	<b>Club/ Organisation</b>
Multisports	Fit for Sport
Multisports	Sports Xtra
Multisports	LSSP
Multisports	The Elms (Sport in Schools)
Netball	Poly Netball
Netball	The Renegades
Netball League	One Netball
Parkour	Parkour Generations
Sailing/Kayaking	Westminster Boating Base
Table Tennis	London Moberly Table Tennis Club
Tennis	Paddington Recreation Ground Tennis Club
Volleyball	IVA
Volleyball	Polonia Volleyball Club
Athletics	RunDemCrewWest
Disability Multisports	Disability Sports Coach
Multisports	Bring the Change
Football	Streetleague
Multisports	Premier Sport
Hockey	The Hampstead and Westminster Hockey Club
Martial Arts	Britannia Shotokan
Martial Arts	Koryo Taekwondo Academy
Multisports	OpenAge

This page is intentionally left blank



## Children, Sports & Customer Services Policy and Scrutiny Committee

<b>Date:</b>	8 <sup>th</sup> June 2015
<b>Classification:</b>	General Release
<b>Title:</b>	Updated report on Looked after Children and Care Leavers
<b>Cabinet Member Portfolio:</b>	Children's Services
<b>Wards Involved</b>	All
<b>Report Author and Contact Details:</b>	Glen Peache, Assistant Director for Looked after Children and Care Leavers.

### 1. EXECUTIVE SUMMARY

- 1.1 This report provides further updated information to the annual report submitted to the Children, Sports and Leisure Policy and Scrutiny committee on the 30<sup>th</sup> of April 2015. The focus of the report is to provide specific information on the role of the Corporate Parent, the educational outcomes of Looked after Children and Care Leavers and to provide the committee with some further analysis in relation to the small increase of Looked after Children numbers at the end of year March 2015.
- 1.2 Data contained within this report is currently being verified in time for the end of year data returns to the Department for Education.

### 2. BACKGROUND

- 2.1 Corporate Parenting is the term used to refer to the collective responsibility of the Council to provide the best care and protection for children and young people who are 'looked after', that is, who are in public care. Effective Corporate Parenting needs the commitment from all Council employees and elected Members and an authority wide approach. These responsibilities for

Local Authorities were first laid out in the Children Act 1989, the Children Act 2004 and reinforced in the Children and Young People's Act 2008.

- 2.2 Government Guidance for Councillors "If this were my child" reinforced the leading role of Councillors in ensuring that their Council acts as an effective Corporate Parent for every child in care, actively supporting standards of care and seeking high quality outcomes that every good parent would want for their child. "When you became a councillor you became responsible for ensuring that the Council acts as the 'corporate parent' for all the children in its care." This duty is to promote positive outcomes, which encompass their education, their health and welfare, what they do in their leisure time and holidays, how they celebrate their culture and how they receive praise and encouragement for their achievements.
- 2.3 The term 'Looked After' refers to any child or young person for whom the authority has, or shares parental responsibility, or for whom the authority provides care and accommodation to the child or young person on behalf of their parent.
- 2.4 The majority of the children and young people need alternative care and accommodation due to the inability of their prime care giver, for a range of reasons, to offer safe and effective caring within the family home and many, but not all, of our children and young people have suffered abuse or neglect of some form prior to coming into our care.
- 2.5 The term 'child' refers to any child or young person between 0-18years of age. The Authority also has a duty and responsibility to those young people who leave care after the age of 18 years until they reach the age of 21 years, or up to 25 if they are in higher education.
- 2.6 Children and young people in and leaving care have been subject to a range of legislation and initiatives. The Children and Young People's Act 2008 specifically contains core recognition of the role and responsibilities of the Corporate Parent and a move towards a more 'normative' approach to parenting, giving children in care the support and care that children in the wider community expect and receive from their parents.
- 2.7 The Corporate Parenting Board, which has a key role in monitoring how the Council discharges its corporate parenting responsibilities has agreed a work plan that focuses upon thematic issues linked to the Looked after Children and Care Leavers three year strategic plan (2014-17). It is anticipated that this will enable greater engagement of children and young people in consultation activities and ensure service improvements are informed by the experiences of children in care and care leavers.

### **3 Numbers of Looked after Children**

- 3.1 Nationally, there were 68,400 children and young people in care on 31 March 2014, a slight increase on the previous year of approximately 1 per cent. This national figure is the highest figure of children in care since the



implementation of the 1989 Children Act. The national end of year figure for 2015 is yet to be verified.

3.2 Within Westminster City Council (WCC) the number of Looked after Children has steadily declined over the last six years, from 247 in March 2009 to 185 children in March 2015. The number of children looked after as a proportion of the population in Westminster City Council is 51 LAC per 10,000 population, which is a 1% increase on the 2014 figure. This is lower when comparing to our statistical neighbours (67.1%) and Nationally (60%).

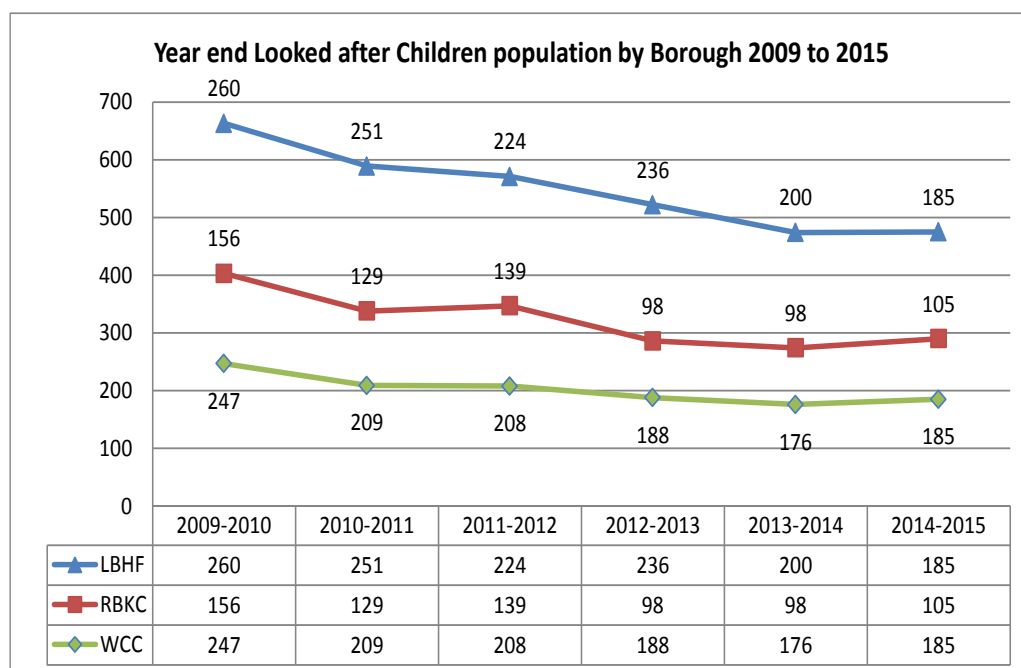


Table 1: Looked After Children population (year end): 2009/10-2014/15

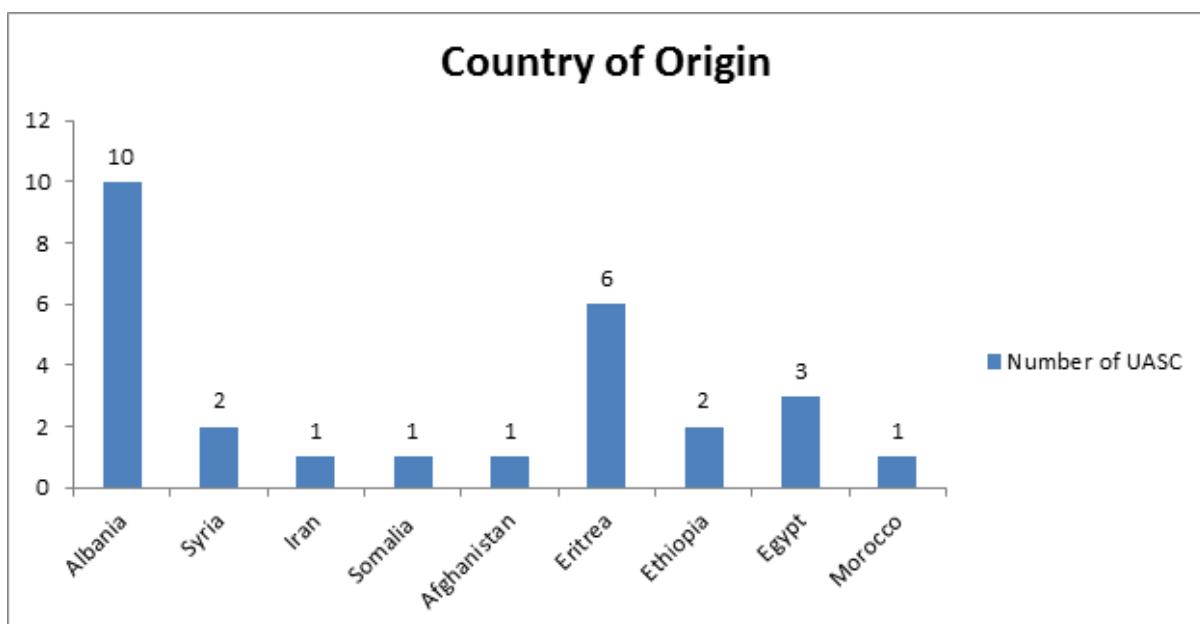
3.3 The majority of children Looked After at the 31 March were aged 10 and over, with 64 children aged 16 and above (35 percent) and 70 aged 10 to 15 (38 percent). Only 19 children were Looked After under the age of five (8 aged under one and 11 aged between one and four).

3.4 The increase in WCC children in care numbers in 2014/15 is largely attributed to the increase in unaccompanied asylum seeking children (UASC). Between April 2014 and March 2015, 27 Asylum Seeking Children became looked after by WCC. This represented 38% of the children who became newly looked after in this year. There are two points of entry of UASC and analysis demonstrates an even balance between referrals via the Pan London rota system (14 young people aged 16 plus) and those deemed to have a local connection e.g. presented to WCC via a range of local agencies and services (13 children under 16 years of age).

**Total number of UASCs looked after by borough by year (2011-2014) and late 2014/15**

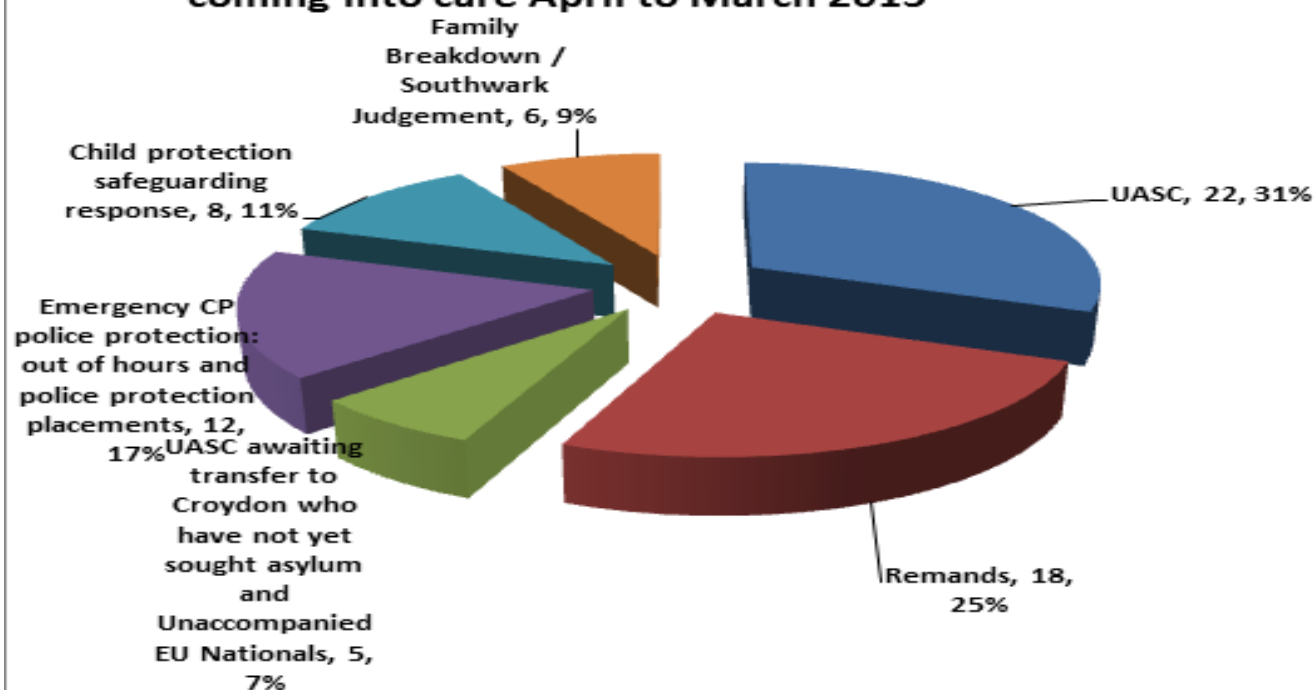
Borough	Year end 2011/12	Year end 2012/13	Year end 2013/14	DEC 2014	JAN 2015	FEB 2015
LBHF	21	15	9	15	15	17
RBKC	22	15	13	20	25	23
WCC	9	9	11	21	27	24

3.5 Mirroring the experiences of other London boroughs, 10 of the new arrivals were Albanian, with also significant numbers arriving from Eritrea (6), Egypt (3), Ethiopia and Syria (2 each), and finally individuals arriving from Afghanistan, Iran, Morocco, and Somalia.



3.6 With reference to the WCC 2014-15 Better City Better Lives pledge you will see by the chart below the breakdown of the reasons why children aged between 14-17 years of age were accommodated. The highest figure for children entering care are either due to the child being an UASC or being placed in remand. A much smaller proportion are entering care due to safeguarding concerns or assessed level of a risk of homelessness and vulnerability (Southwark Judgement cases).

### Number of young people aged 14 to 17 years coming into care April to March 2015



- 3.7 In the same 2014/15 year, there were 32 Care Leavers over the age of 18 who were classified as seeking asylum. The largest number exit care by receiving their permanent leave to remain (11 young people) and exiting the service in the same way as British born children. However the service has seen increasing numbers of young people going permanently missing (4 young people currently with more at risk) on receiving a negative decision from the home office. 1 young person was deported and another 1 young person was referred to Asylum Support Services as they were not eligible for further local authority assistance. Of those that remain, they continue to be supported by the leaving care service whilst they await a decision by the Home Office in line with our statutory obligations. The age of those awaiting a decision ranges from 18 to 24 years old
- 3.8 A range of actions are being implemented in order to address the current trend. These include ensuring robust age assessments of UASC young people to prevent those assessed to be over 18 years of age entering care, examining our alternatives to remand that is placed before the Courts for young offenders, development of a range of interventions linked to the 'Focus On Practice' change initiative to support families and avoid adolescent care entry and develop robust rehabilitation home support packages when it is assessed that this is safe to do so.

## **4 SAFEGUARDING OUTCOMES FOR LOOKED AFTER CHILDREN AND CARE LEAVERS**

- 4.1 Children who are subject to frequent placement moves are less able to form positive attachments with carers which makes them more vulnerable to unsafe relationships from other adults or their peer group. The number of placement moves that children have is carefully monitored to ensure plans are adapted to make placements more resilient where required. In 2014/15 only 3 percent of Looked After Children experienced three or more placement moves, a significant reduction on previous years (averaging 11.5 percent in 2012/13 and 2011/12) and much lower than the national average of 11 percent.
- 4.2 As a geographically small borough, not all Looked After Children are able to live within Westminster when they are in care. Of the children and young people Looked After at the 31 March 2015, 81 percent were placed in London boroughs, including within Westminster.
- 4.3 Looked after children are significantly more likely to go missing than their peers, and therefore vulnerable to child sexual exploitation (CSE). Children with frequent placement changes are more likely to go missing and this behaviour also impacts upon the stability of their current placement. There were a total of 41 episodes of missing children in care in 2014/15. A robust process is in place that ensures missing children are visited and interviewed in order to address any potential safeguarding issues that the child may be encountering.
- 4.4. With specific reference to children at risk of CSE there have been a number of developments to identify those assessed to be at risk and to provide a comprehensive support package to ensure that risks are reduced. The Local Safeguarding Children's Board (LSCB) oversees this work. Local developments have been informed by the publication of London Child Sexual Exploitation Operation Protocols. These include:
- a. Agreement of a CSE Strategy by the LSCB.
  - b. The implementation of a monthly Multi-Agency Sexual Exploitation meeting chaired by the Police and Children's Services.
  - c. A shared risk assessment tool.
  - d. A common pathway to services coordinated through the Multi-Agency Safeguarding Hub (MASH).
  - e. Development of data sets and problem profiles
  - f. A range of training and awareness-raising initiatives.
  - g. Trialing a specific CSE screening tool.

4.5 Currently WCC has a total of 40 children identified at risk of CSE and these children are categorized from the assessment on how serious the risk is. The majority of children in WCC are within the blue category, which following an assessment has identified the potential to present as vulnerable to CSE. With specific reference to Looked after Children there are currently two children out of the 40 and both are assessed to be in the blue category.

<b>CSE Concern</b>	<b>LBHF</b>	<b>RBKC</b>	<b>WCC</b>	<b>Grand Total</b>
<b>CSE Blue</b>	<b>19</b>	<b>17</b>	<b>36</b>	<b>72</b>
<b>CAT 1</b>	<b>7</b>	<b>9</b>	<b>3</b>	<b>19</b>
<b>CAT 2</b>	<b>3</b>	<b>1</b>	<b>1</b>	<b>5</b>
<b>CAT 3</b>	<b>0</b>	<b>0</b>	<b>0</b>	<b>0</b>
<b>Grand Total</b>	<b>29</b>	<b>27</b>	<b>40</b>	<b>96</b>

4.5 In 2014/15 the legal framework supporting and protecting Care Leavers aged 18 and above has changed. Care Leavers aged 16 – 18 continue to be supported and safeguarded through the application of child care legislation. Under the Care Act 2014, implemented in April 2015, Local Authorities now have a duty to conduct transition assessments. This is where there is a likely need for care and support when the young person turns 18 and when that assessment would be of significant benefit. Statutory guidance cites some examples relevant to the care leaving population for those young people:

- whose needs have been largely met by their educational institution, but who, once they leave, will require their needs to be met in some other way (e.g. those with autism);
- detained in the youth justice system who will move to adult custodial services and
- receiving child and adolescent mental health services (CAMHS) who may also require care and support as adults even if they did not receive children's services from their local authority.

The Act also makes enquires to safeguard adults a statutory duty, if they are thought to be at risk.

## **5. EDUCATIONAL OUTCOMES FOR LOOKED AFTER CHILDREN**

5.1 Education that encourages high aspirations and individual achievement, with minimum disruption, is central to improving immediate and long-term outcomes for children in care and Care Leavers. We know that these children

and young people face significant barriers to achieving good educational outcomes, therefore closing the attainment and progress gap and creating a culture of high aspirations is a major priority for WCC.

- 5.2 The data provided within this report is primarily from the academic year 2013/14 as examinations for this year will be taken during the summer. In 2013/14 there were only three pupils in the Key Stage 1 cohort with all achieving L2 or above in Reading, Writing and Mathematics. A key factor in their achievement was that these pupils were in relatively stable school and foster placements; they attended mainstream school and none had a statement of Special Educational Needs (SEN).
- 5.3 In the same year there were 6 pupils in the Key Stage 2 cohort with 50 percent achieving Level 4 or above in both English and Mathematics. Performance at Key Stage 2 has declined since the excellent results of 2012 and 2013; however, this was expected and reflects the more complex nature of the children within the current cohort. Despite the fall in results, it is encouraging that 5 of the 6 pupils met their targets and reached or exceeded their expected level of progress. 60 percent of pupils in mainstream schools achieved L4 in reading, writing and Maths. Pupils who made their expected level of progress were in relatively stable school and foster placements and attended mainstream school.
- 5.4 Most pupils in Key Stage 3 made good progress with 70 percent reaching Level 5 or above in reading and writing (English). Pupils who are making expected levels of progress are predominately in long term stable foster and school placements. One pupil moved to a boarding school at the end of year 8 and it is encouraging that academically she is achieving well. All pupils attended a provision rated as good or outstanding by OFSTED.
- 5.5 There were 21 pupils in the Key Stage 4 cohort. The percentage of pupils achieving 5 GCSE's grades A\*-C is less than in previous years (24 percent); while this is disappointing it was not totally unexpected and reflects the more challenging and diverse nature of the cohort, as well as previous years' high levels of performance. Overall, Westminster Looked After Children are still expected to be above average for all Looked After Children nationally. One pupil achieved exceptionally well, achieving A or A\* in all but one of her subjects. Overall performance was also affected by the fact that two pupils were not educated in the UK and one pupil is still in year 10. One pupil became pregnant during year 11 but managed to complete her education before the birth of her baby.
- 5.6 The most significant factor in determining overall performance of pupils in KS4 was the high number of pupils educated in non mainstream provision, which reflects the more complex and challenging needs of the cohort. This includes 5 in alternative provision and 6 in special day or residential schools. Of those pupils educated in mainstream schools 40 percent achieved 5 GCSE grades A\*-C including English and Maths.

- 5.7. Steady progress has been made in addressing the issues and barriers around sustaining education, training and employment for post 16 Looked After Children and Care Leavers. Not in education, employment or training (NEET) levels fluctuate but analysis of EET performance at the end of the academic year 2014/15 shows 71 percent of 19-21 year old care leavers are EET.
- 5.8 Comparing outcomes for our children in care with other boroughs and all pupils should be treated with caution. Cohorts vary in size from borough to borough and as a significant number of children in WCC care attend school outside of the borough, direct a comparison with pupils attending Westminster schools does not always provide a useful measure. However, comparisons of outcomes for Westminster children in care and other care pupils show that Westminster achieves outcomes at KS2 and KS4 similar or above the national averages. 50 percent of WCC children in care achieved at least Level 4 in Reading, Writing and Maths compared to 48 percent nationally, 52 percent for those in London and 54 percent for those in inner London. At KS4 WCC's children in care achieved outcomes above the national averages with 19 percent achieving 5 GCSE grades A\*-C including English and Maths compared to 12 percent nationally, 15 percent in London and 13.8 percent in Inner London.
- 5.9 The attainment gap between children in care and all non looked after pupils remains wide for the reasons already discussed. At KS2 50 percent of WCC's children in care achieved Level 4 or above in Reading, Writing and Maths compared to 67 percent of all pupils and 85 percent of WCC's pupils. At KS4 19 percent of WCC's children in care achieved 5 GCSE grades A\*-C including English and Maths compared to 53% percent of all pupils and 68 percent of WCC's pupils.
- 5.10 It is expected that outcomes at all Key Stages will improve in this (2015) academic year. At KS1 and KS2 it is expected that all looked after pupils will achieve either a L2 or above or a Level 4 or above in Reading, Writing and Maths. At KS4 it is expected that 42 percent of pupils will achieve at least 5 GCSE grades A\*-C including English and Maths. It should be noted however, that cohorts in each year group is less than 10. Currently there have been no permanent exclusion, but the average attendance is currently running lower than expected, mainly due to the arrival of a number of UASC who became looked after and did not have a school place. The percentage of 16-21 year olds in education, employment or training is expected to be between 70 and 75 percent.

## **6 Key Matters for the Committee's Consideration**

- 1) The rise in numbers of looked after children is largely attributed to children seeking asylum.
- 2) Potential welfare benefit changes may have an impact upon Care Leavers ability to obtain housing benefits and therefore some greater analysis of the financial implications to the council is required.

3) The changes to the Care Act will require agreement with adult services as to how this will be effectively implemented to meet the specific needs of Care Leavers assessed to require ongoing support. Specifically agreement is required as to what service will undertake assessments of adult safeguarding risks.

4) I am proposing that the committee considers that an update report is scheduled within the forward plan, which provides further information in relation to UASC's care entry, any identified impact to care leavers ability to claim housing benefit and to inform members about how we have progressed transition assessments in partnership with adult services.

**If you have any queries about this Report please contact:**

Glen Peache Assistant Director for Looked after Children and Care

020 7361 3317

[glen.peache@rbkc.gov.uk](mailto:glen.peache@rbkc.gov.uk)